

# Norauto

PORTE-VÉLOS D'ATTELAGE  
SUSPENDU

OPGEHANGEN FIETSDRAGER  
VOOR OP TREKHAAK

FAHRRADTRÄGER FÜR  
ANHÄNGERKUPPLUNGSMONTAGE

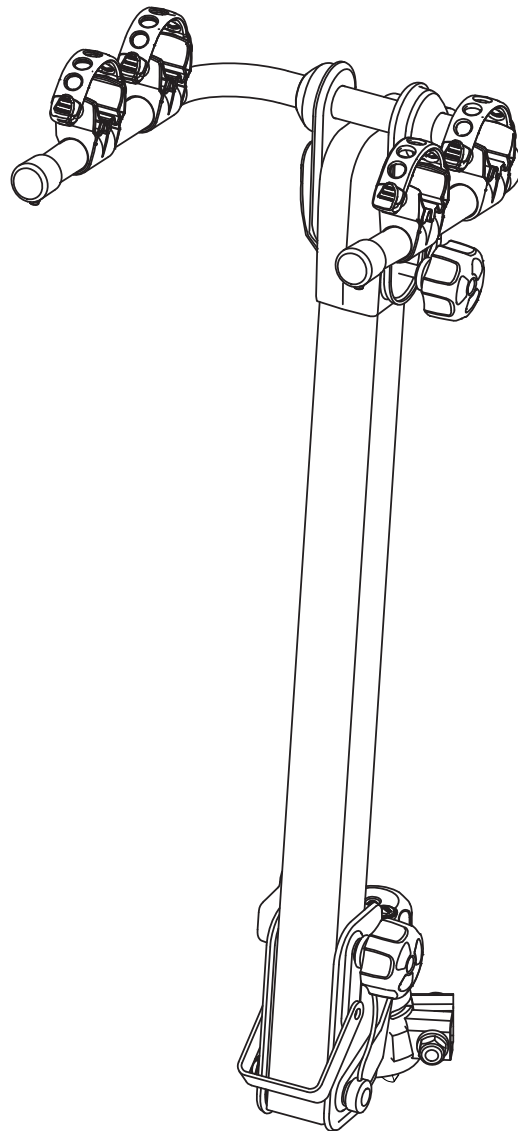
PORTABICICLETAS DE ENGANCHE  
SUSPENDIDO


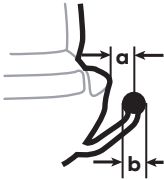

TOW BAR SUSPENDED BICYCLE  
RACK

PORTABICI DA GANCIO TRAINO  
SOSPESO

PORTA-BICICLETAS DE ENGATE  
SUSPENSO

## SLIM 100-2



 <b>kg</b>	<b>6.1 kg</b>
	<b>a: &gt;65mm</b> <b>b: Ø50mm</b>
	<b>MAX 2x15 kg</b>

Lisez impérativement le manuel d'utilisation avant toute utilisation du produit.  
De handleiding verplicht lezen voor elke ingebruikname  
Vor der Verwendung des Produkts ist diese Bedienungsanleitung aufmerksam durchzulesen.  
Es esencial leer el manual antes de usar el producto.  
It is essential to read the manual before use.  
È essenziale leggere il manuale prima dell'uso.  
Leia o manual do utilizador antes de utilizar o produto.

ART: 2390948

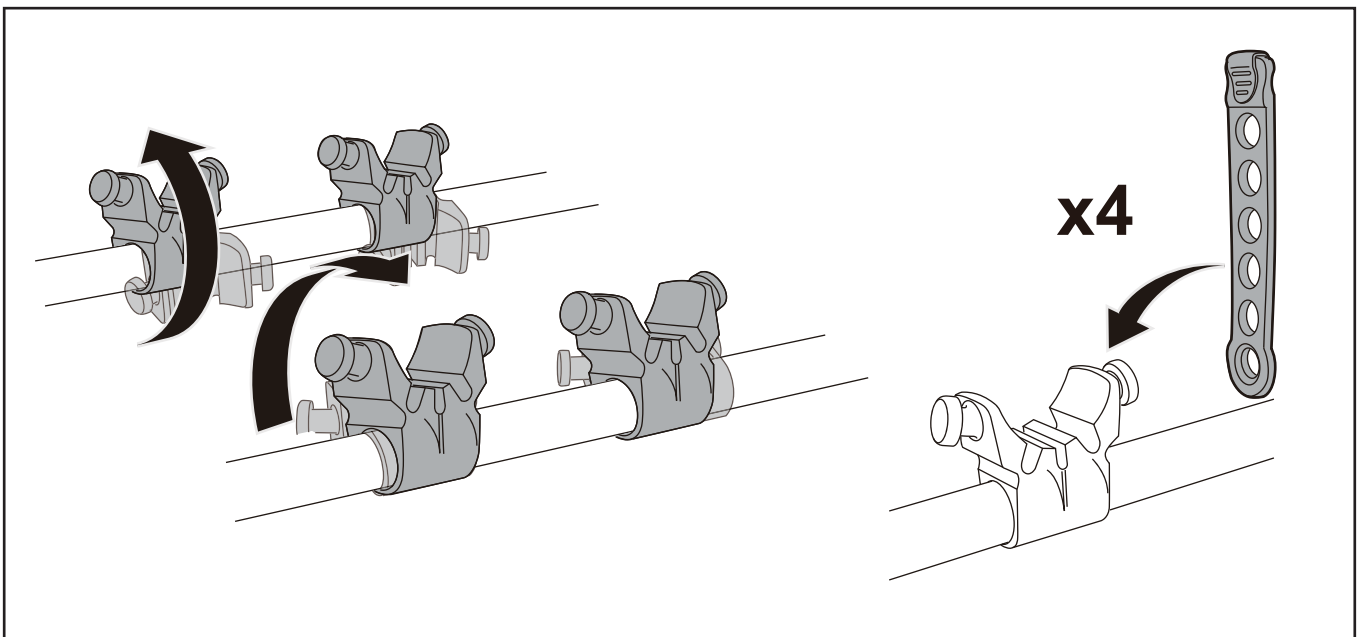
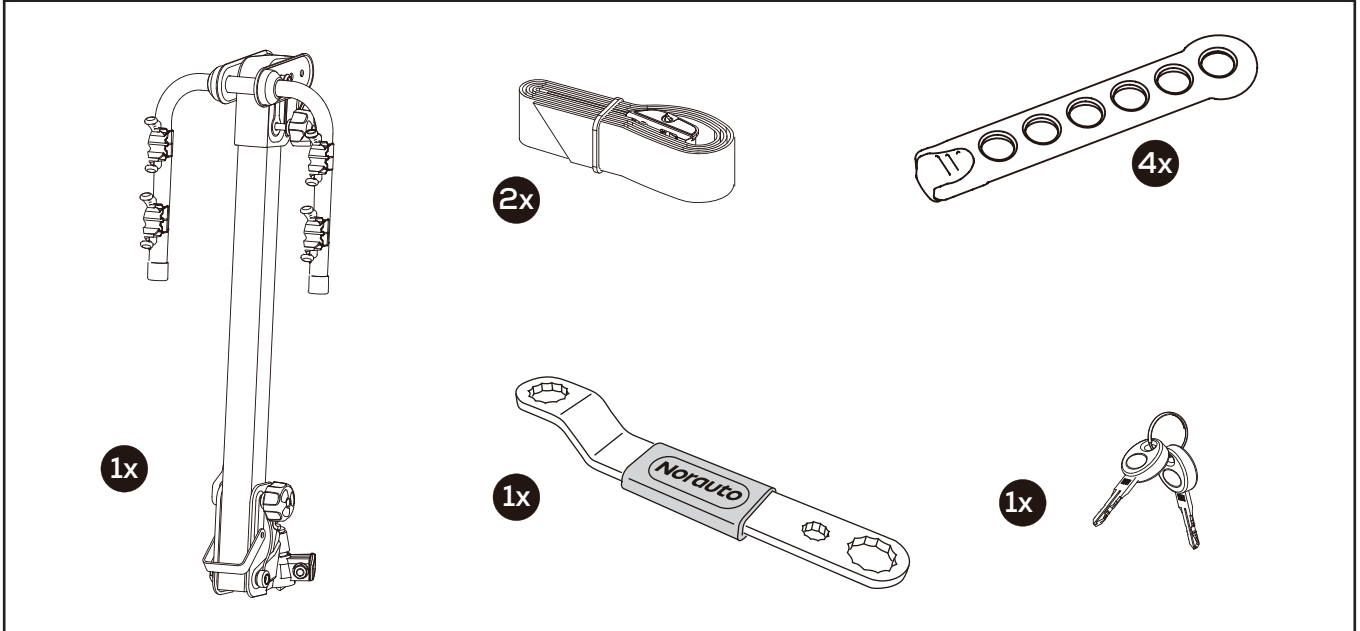
**FR** - Notice d'utilisation / **NL** - Gebruiksaanwijzing  
**DE** - Bedienungsanleitung / **ES** - Instrucciones  
**EN** - User manual / **IT** - Istruzioni per l'uso  
**PT** - Instruções de utilização





**PIÈCES / WISSELSTUKKEN / TEILE / PIEZAS / PARTS/  
PEZZI / PEÇAS**

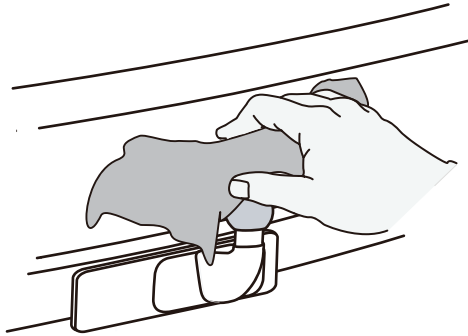
\* Certaines des pièces listées ont potentiellement été pré-montées sur la structure par le fabricant.  
Some of the listed parts may have been pre-assembled on the structure by the manufacturer.



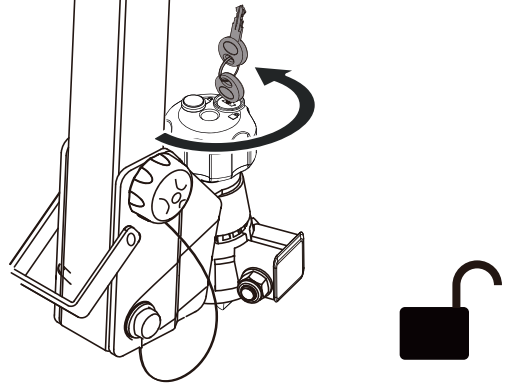


ASSEMBLAGE DU PORTE-VÉLOS / DE PRODUCTIE VAN DE FIETSENDRAGER  
MONTAGE DES FAHRRADTRÄGERS / ENSAMBLAJE DEL PORTABICIS  
ASSEMBLY OF THE BICYCLE RACK / ASSEMBLAGGIO DEL PORTABICI  
MONTAGEM DO PORTA-BICILETAS

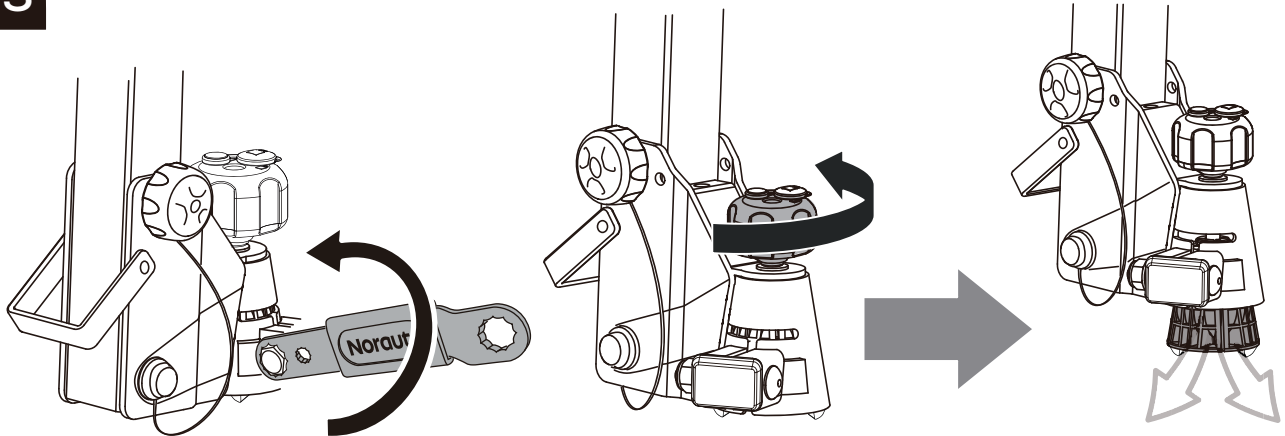
1



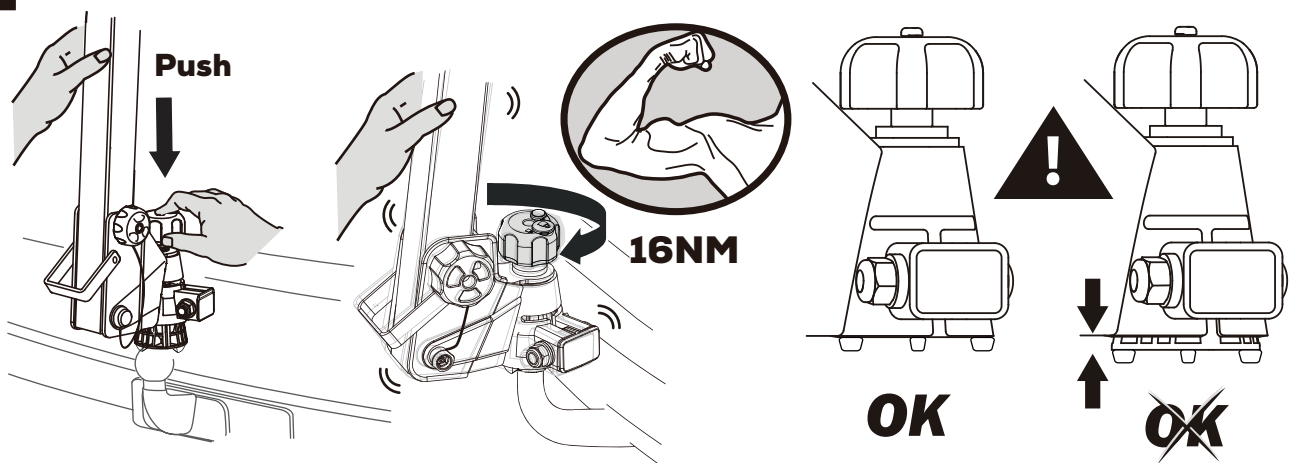
2

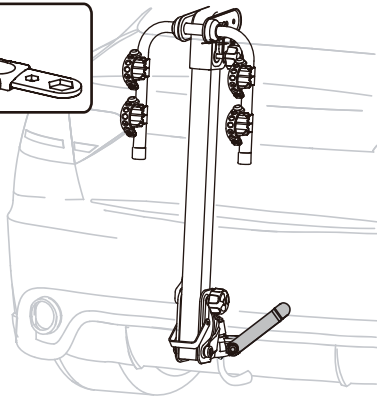
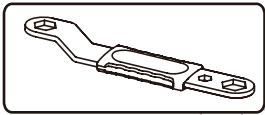


3

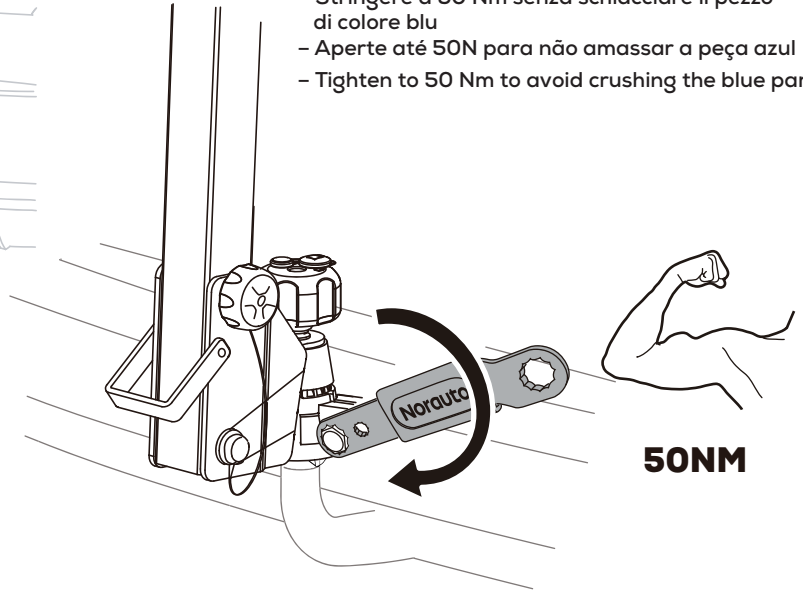
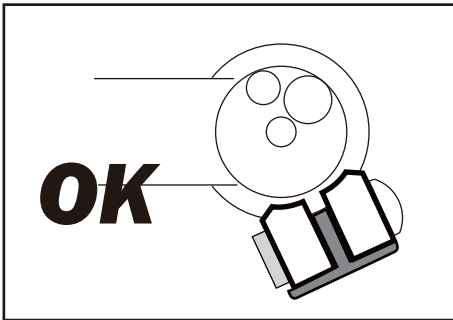
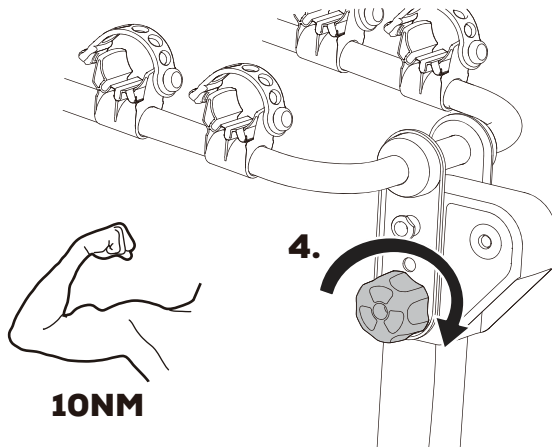
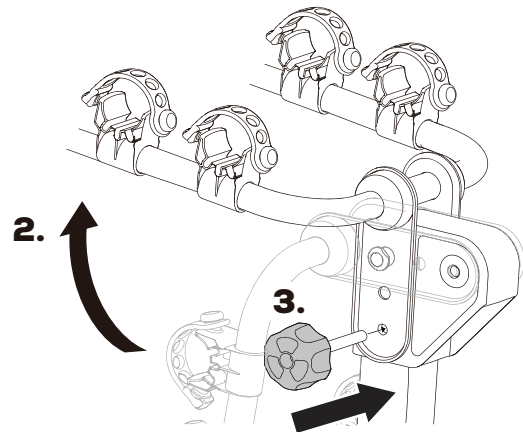
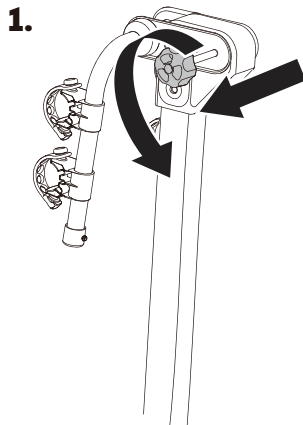


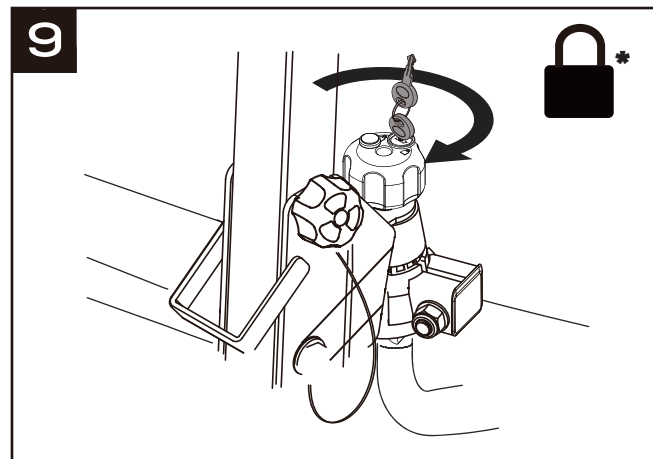
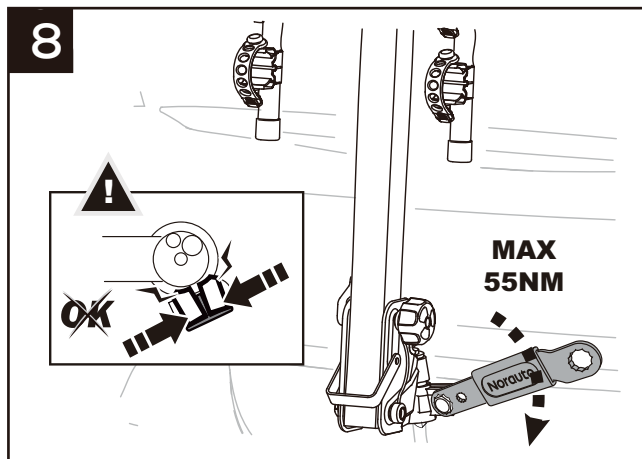
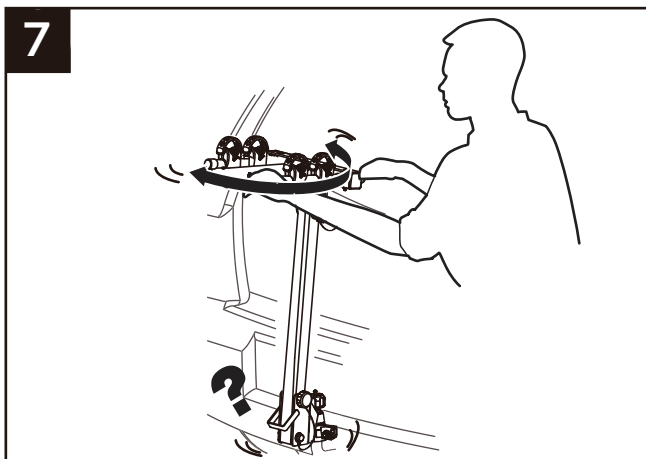
4



**5**

- Serrer à 50Nm sans écraser la pièce bleu
- Aanspannen op 50Nm zonder het blauwe stuk te verpletten
- Mit 50 Nm anziehen, um ein Quetschen des blauen Teils zu vermeiden
- Apretar a 50Nm sin aplastar la pieza azul
- Stringere a 50 Nm senza schiacciare il pezzo di colore blu
- Aperte até 50N para não amassar a peça azul
- Tighten to 50 Nm to avoid crushing the blue part

**6****10NM**



\* SI LE PORTE-VELOS BOUGE, VISSER L'ECROU POUR AUGMENTER LE COUPLE DE SERRAGE.

SI EL PORTACICIS SE MUEVE, APRETAR EL TORNILLO PARA AUMENTAR LA PRESIÓN.

WENN DER FAHRRADTRÄGER BEWEGT, ZIEHEN SIE DIE MUTTER ZUM ERHÖHEN AN DAS ANZUGSMOMENT.

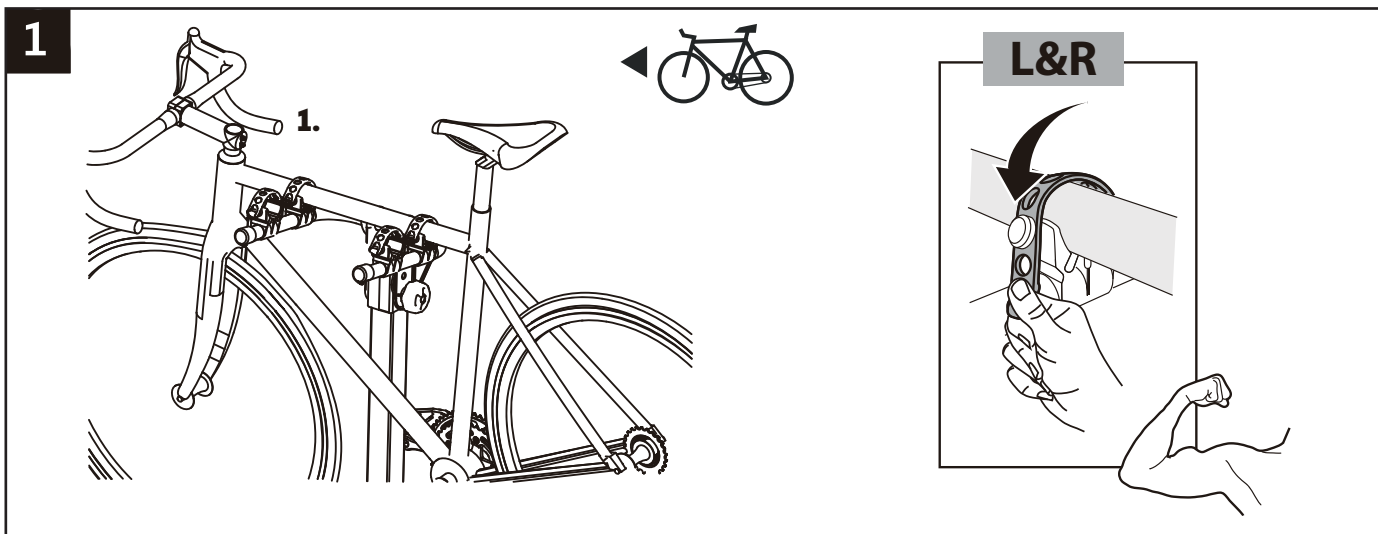
SE IL PORTABICI SI MUOVE, AVVITARE IL DADO PER AUMENTARE LA FORZA DI CHIUSURA.

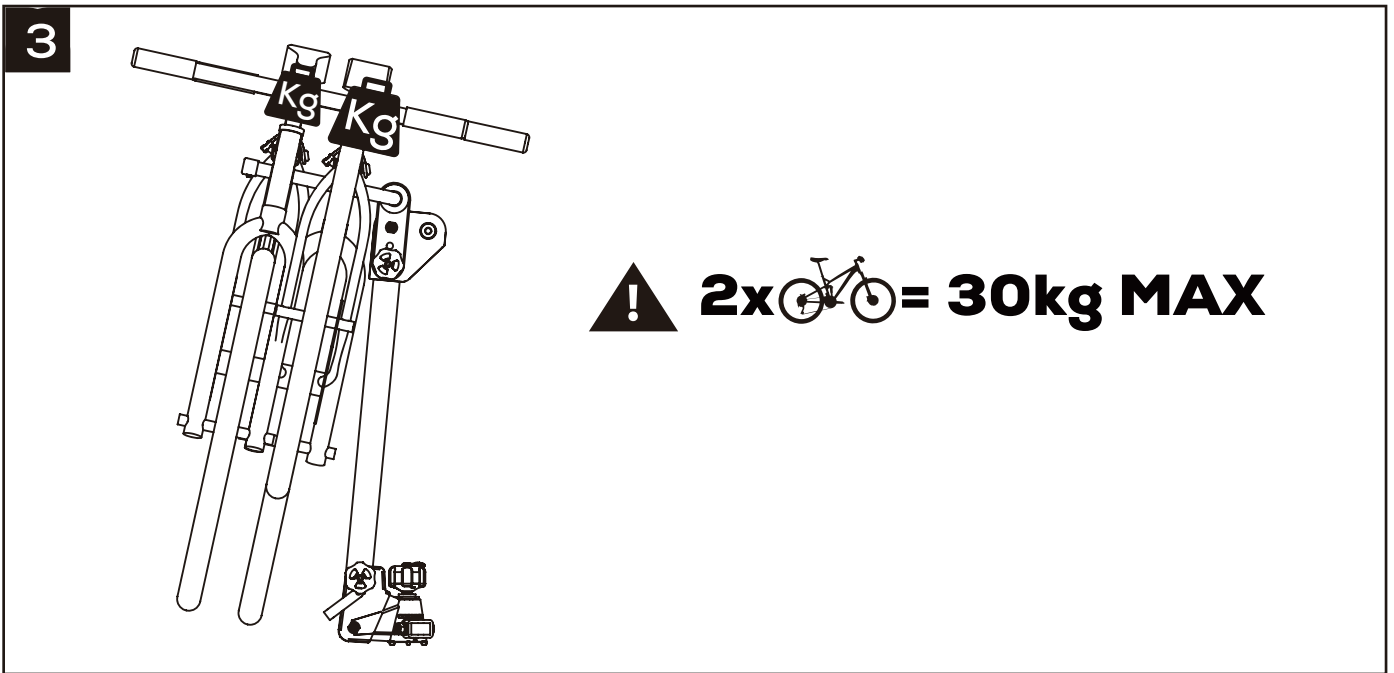
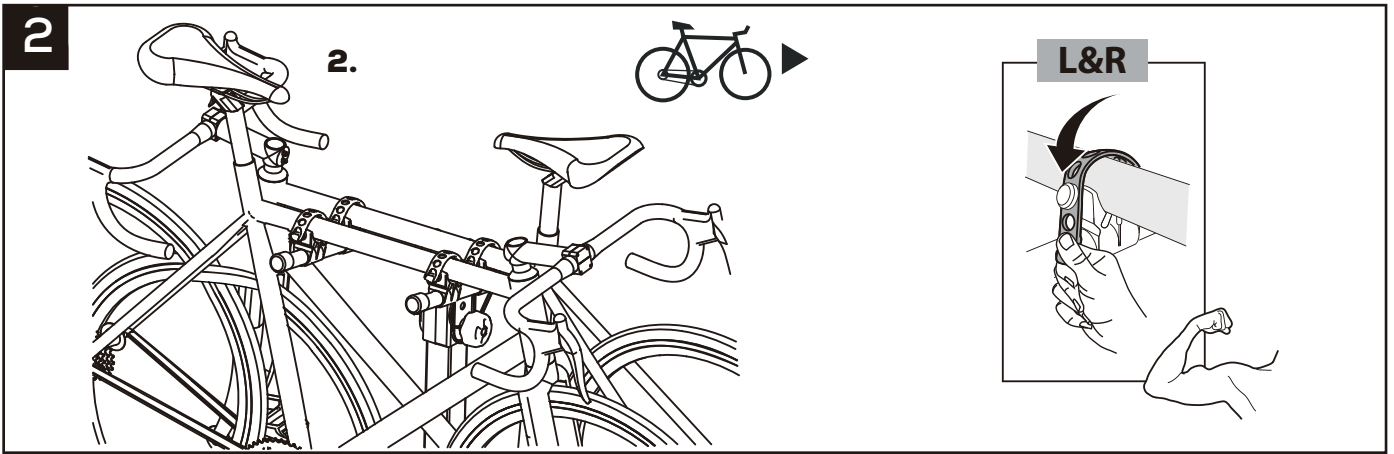
SE O PORTA-BICICLETAS SE MOVE, APERTE A PORCA PARA AUMENTAR A FORÇA DE APERTO.

ALS DE FIETSDRAGER BEWEEGT, EN VIJS DE MOER VAST OM DE SPANNING TE VERGROTEN.

IF THE BICYCLE RACK MOVES, INCREASE THE TIGHTENING BY SCREWING THE KNOB

**MONTAGE DES VÉLOS / MONTAGE VAN DE FIETSEN  
MONTAGE DER FAHRRÄDER / MONTAJE DE LAS BICICLETAS  
BICYCLES MOUNTING / MONTAGGIO DELLE BICI  
MONTAGEM DAS BICICLETAS**





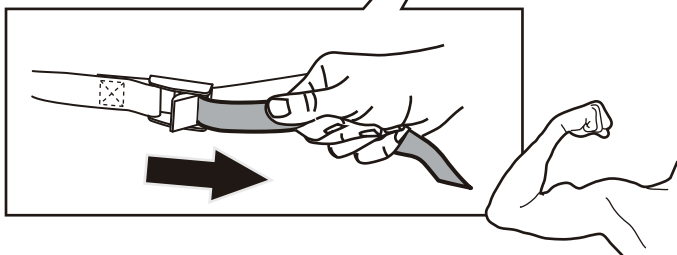
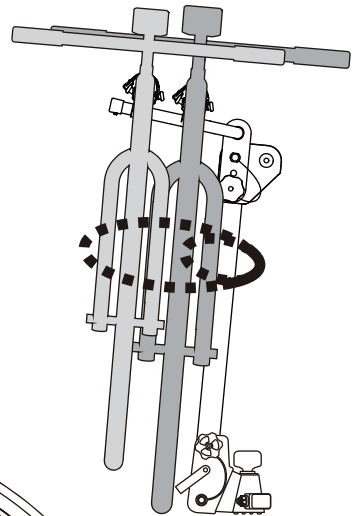
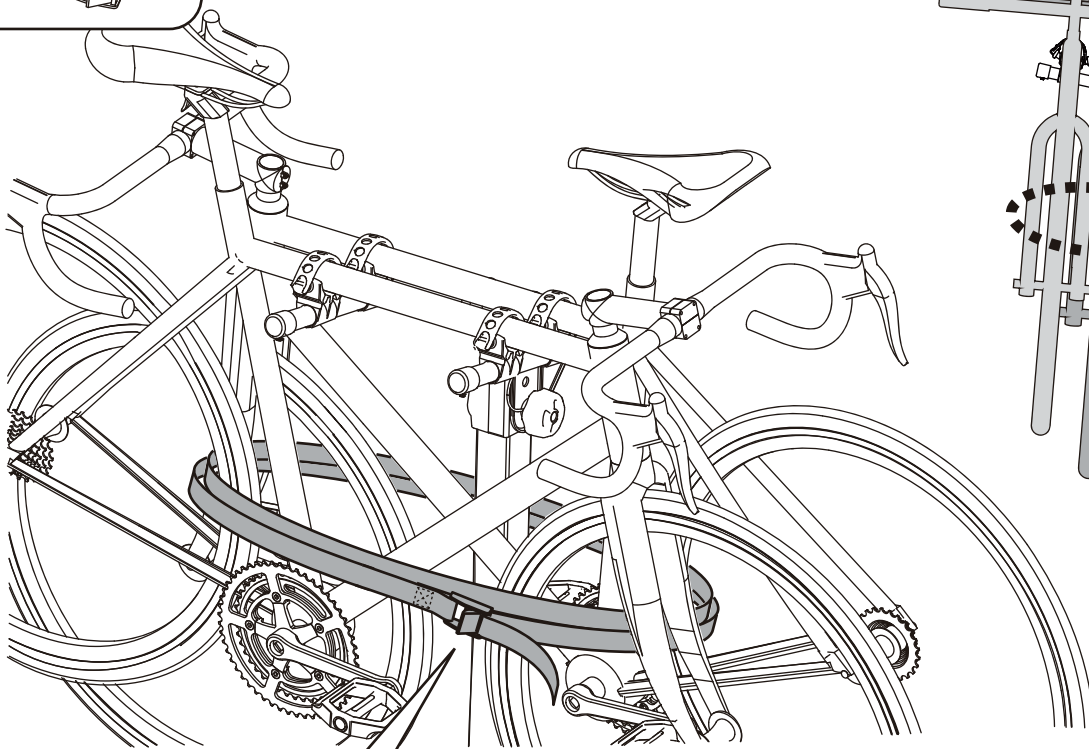
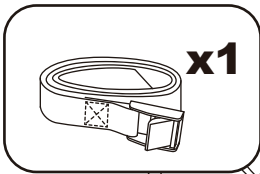
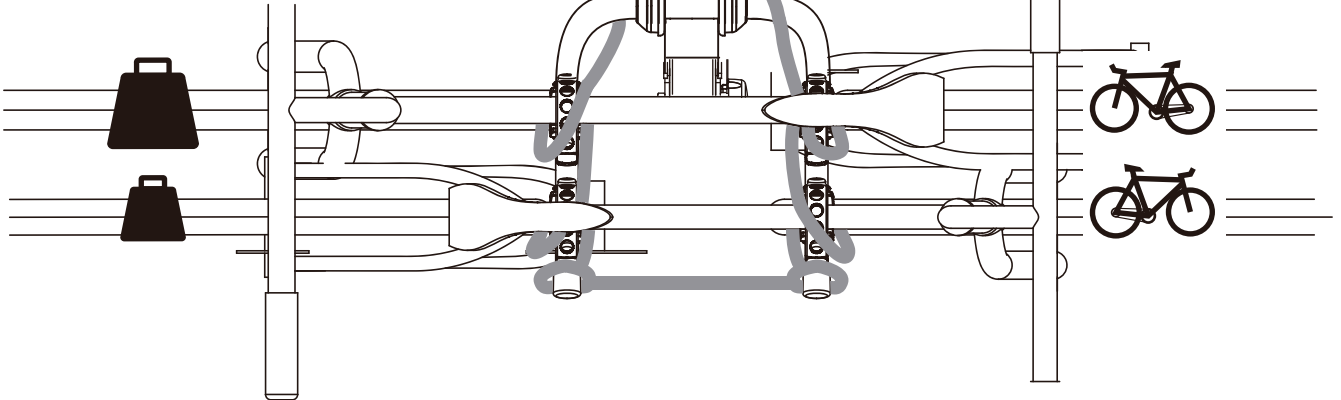
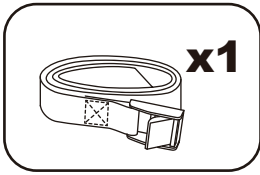
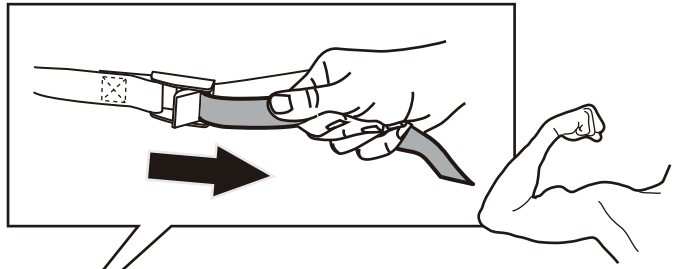
RAPPEL / HERINNERING / ERINNERUNG / RECUERDE / REMINDER / RICORDA / LEMBRETE

S		2 MAX:
40 kg	<b>6.1kg</b>	30 kg
45 kg		30 kg
50 kg		30 kg
55 kg		30 kg
60 kg		30 kg
65 kg		30 kg
70 kg		30 kg
75 kg		30 kg
80 kg		30 kg
85 kg		30 kg
> 85 kg		30 kg

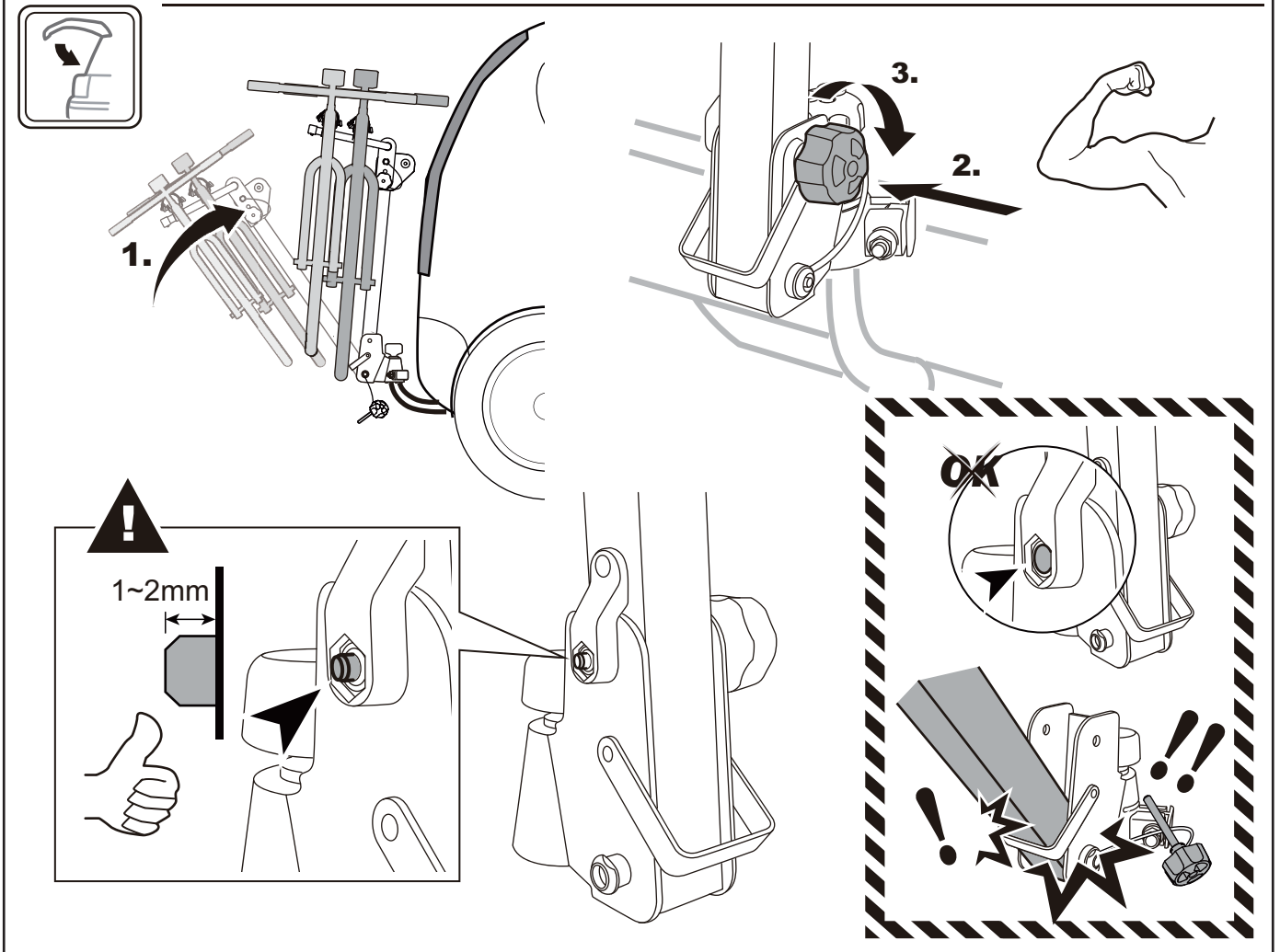
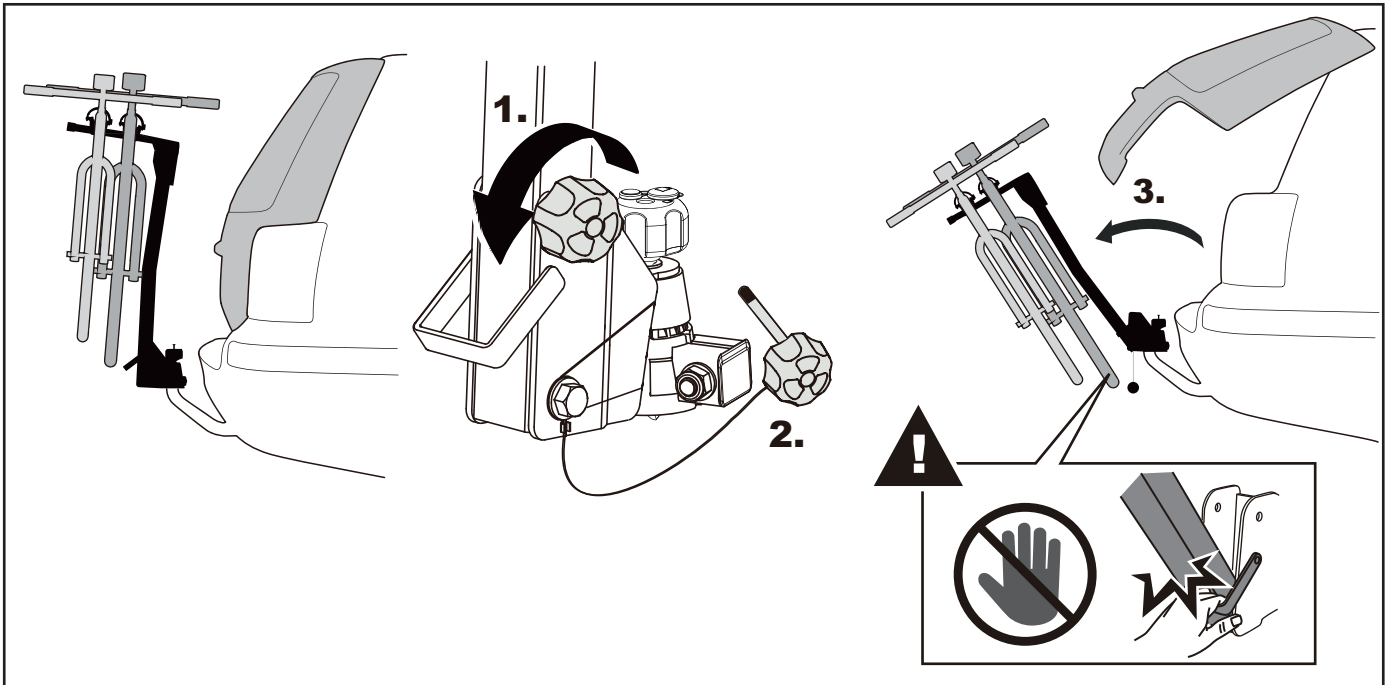
4



**Maximal capacity:  
30kg or 2 bikes**



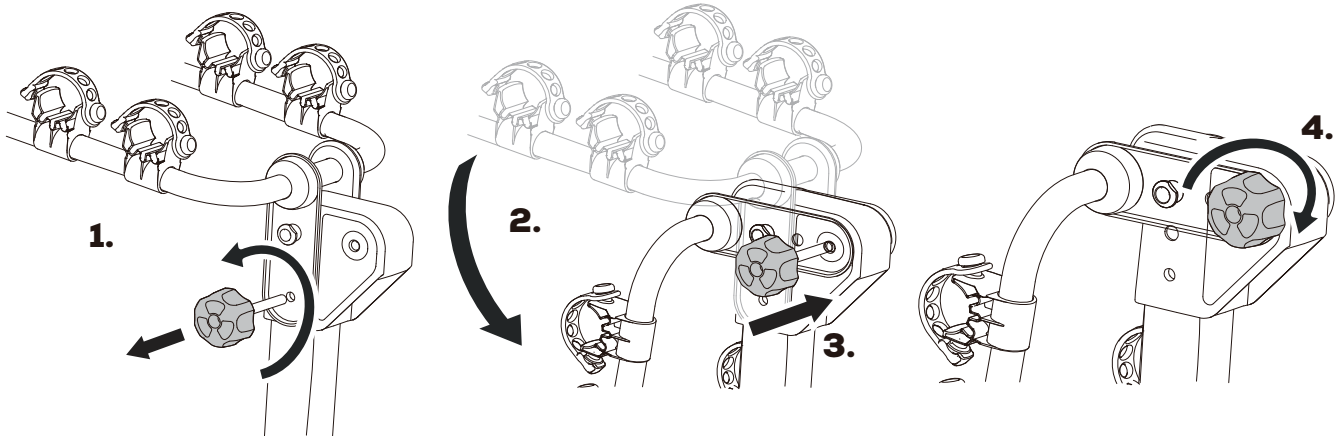
**BASCULEMENT DU PORTE-VÉLOS POUR UN ACCÈS AU COFFRE**  
**KANTELEN VAN DE FIETSENDRAGER OM TOEGANG TE HEBBEN TOT DE KOFFER**  
**ABKLAPPEN DES FAHRRADTRÄGERS ZUM ÖFFNEN DES KOFFERRAUMS**  
**EL PORTABICIS BASCULA PARA PODER ACCEDER AL MALETERO**  
**TILTING OF THE BICYCLE RACK FOR AN EASY ACCESS TO THE TRUNK**  
**PORTABICI BASCULANTE PER ACCEDERE AL BAULE**  
**BASCULAR O PORTA BICICLETAS PARA ACEDER Á MALA**



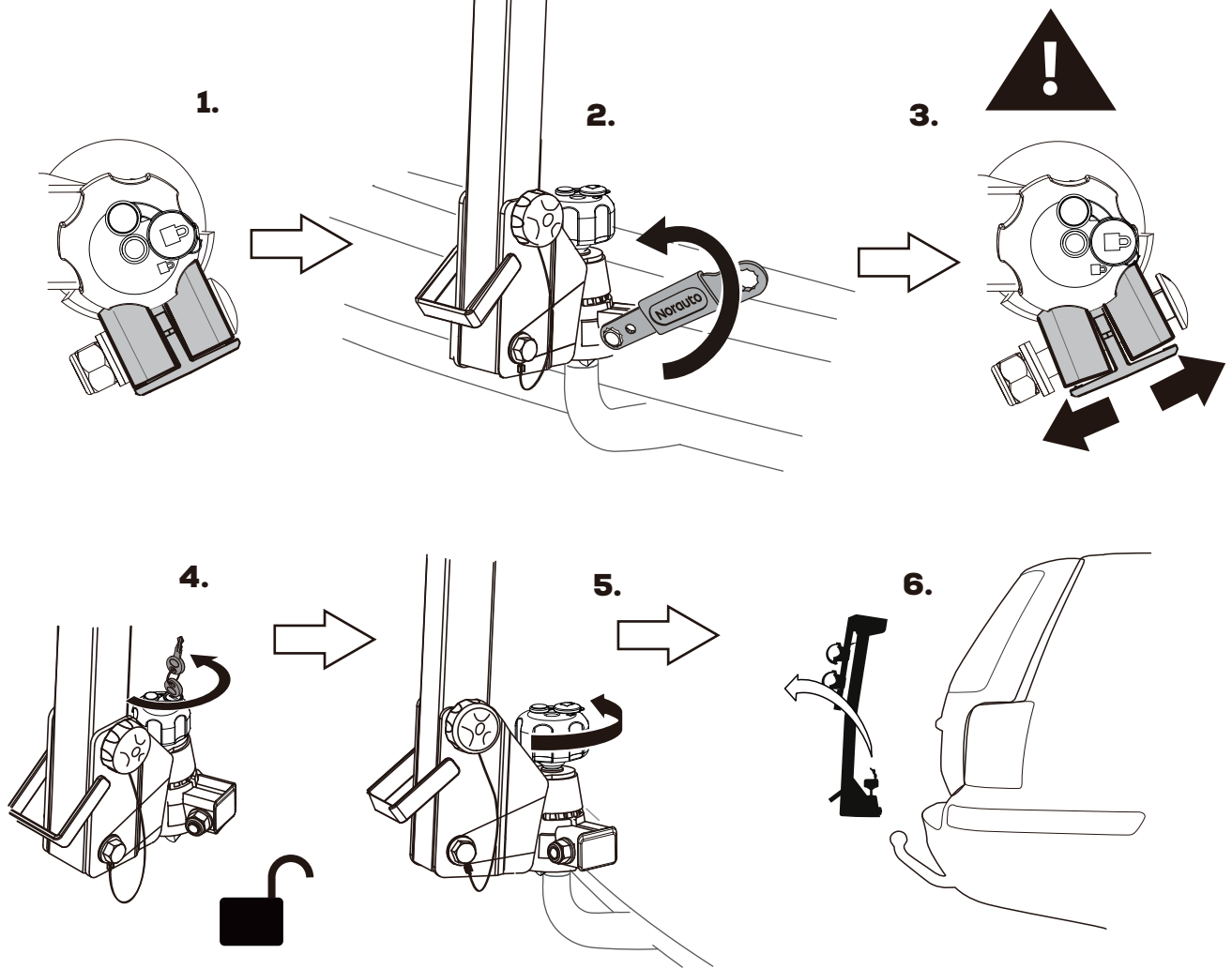


DEMONTAGE / DESMONTAJE / ABMONTIEREN / DISASSEMBLY  
SMONTAGGIO / DESMONTAGEM

1



2



**NORAUTO**  
511/589 rue des Seringats 59262 Sainghin-en-Mélantois France  
www.norauto.com  
www.atu.eu  
Made in Taiwan / Fabricado en/na Taiwan / Fabriqué à Taiwan

 **Mobivia**

