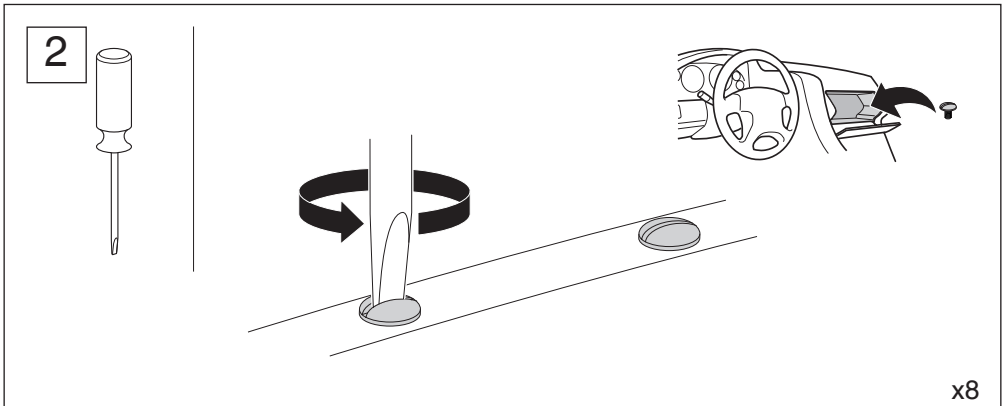
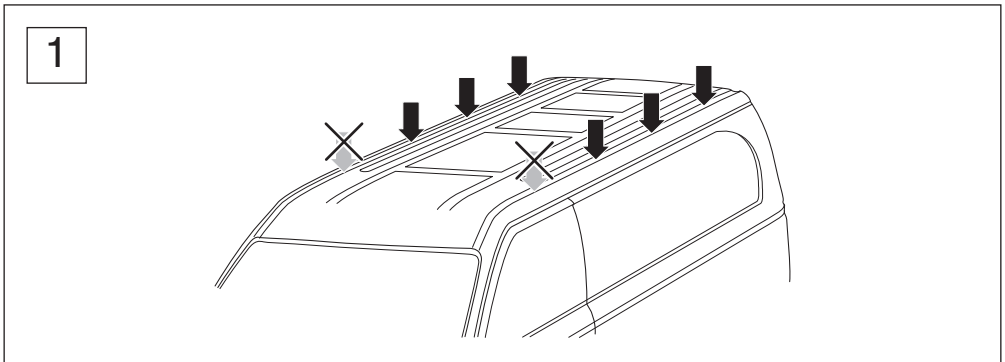
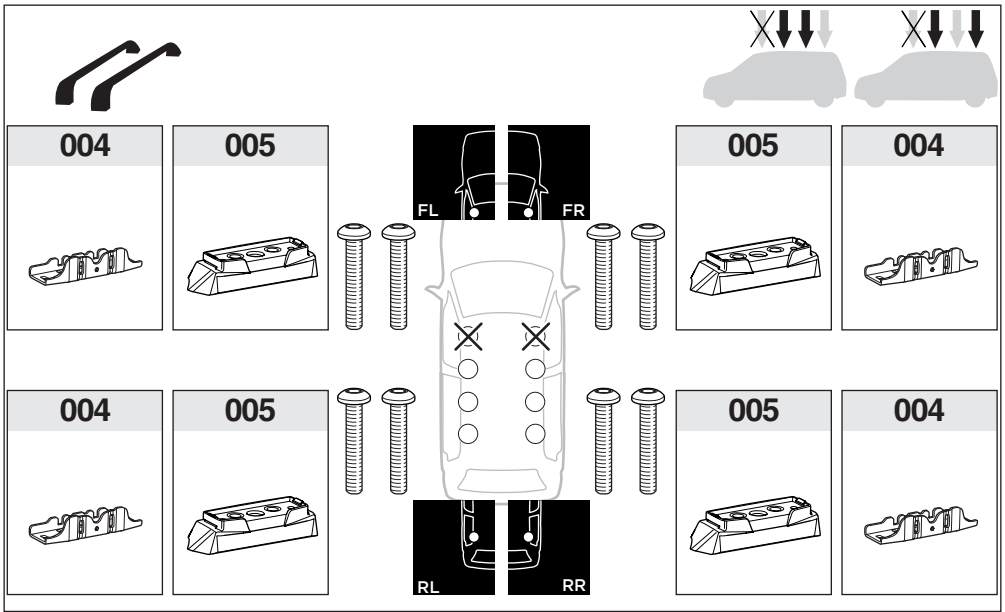
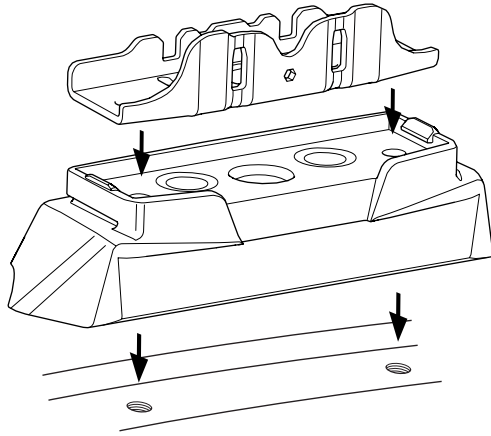


Diagram illustrating the weight limit and speed restriction for the roof rack. On the left, a scale shows a 68 Kg weight on a 7 Kg base, with a bracket indicating a total weight of 75 Kg. On the right, a car is shown with a roof rack. A speedometer indicates a maximum speed of 80 km/h, with a warning triangle symbol.

Diagram showing the parts required for installation. It includes four boxes of part 005, four individual parts 004, and two columns of screws. The screws in the first column are longer than the screws in the second column.

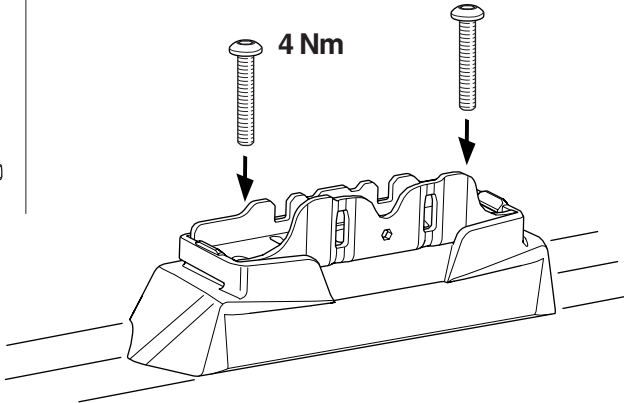
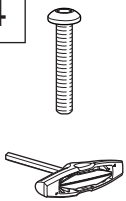


3



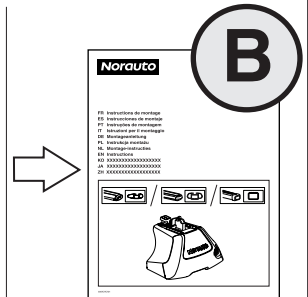
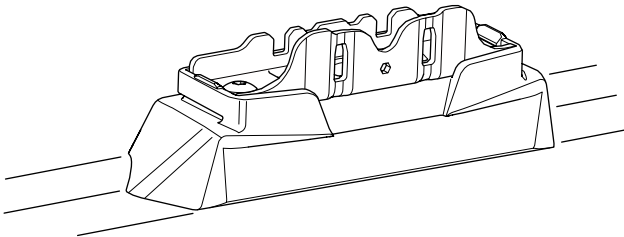
x4

4



x8

5



x4

NORAUTO

511/589 rue des Seringats
59262 Sainghin-en-Mélantois
FRANCE