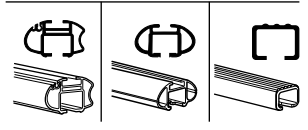
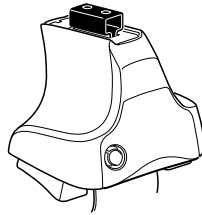


Kit 1464

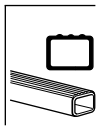
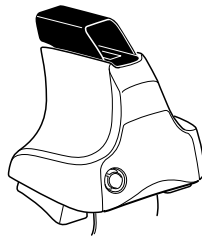
FIAT 500, 3-dr Hatchback, 07-*

* without glass roof

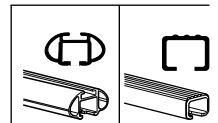
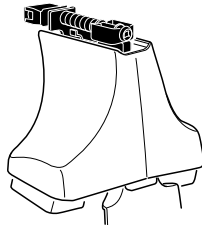
480R
754



480



750



THULE[®]
SWEDEN

ISO 11154-E

Max. 50 kg
Max. 110 lbs

x1

x4

x4

x4
 x4

480R/754

x1

x4

x4

x4

480

x1

x4

x4

750

x2 x2 x2 x4	x2	x2 x2 x4 x4	x2 x2	x2

← **907** x 2

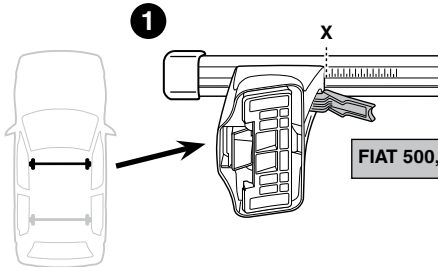
← **932** x 2

← **137** x 4

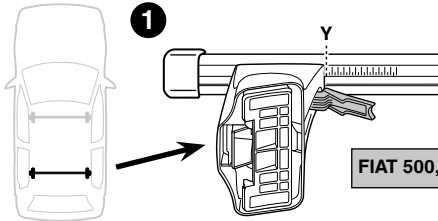
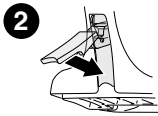
x 1

Kit

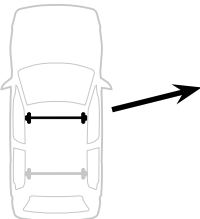
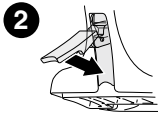




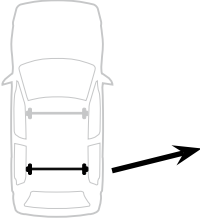
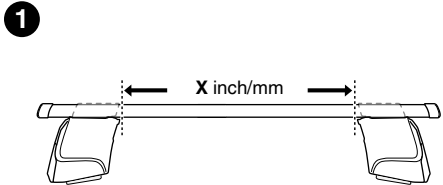
FIAT 500, 3-dr Hatchback, 07-	X
	33,5



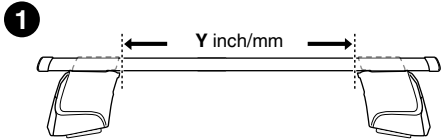
FIAT 500, 3-dr Hatchback, 07-	Y
	28



FIAT 500, 3-dr Hatchback, 07-	X inch	X mm
	38 7/8"	986 mm



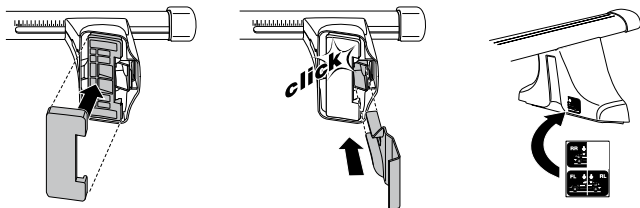
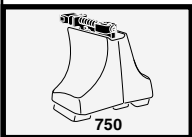
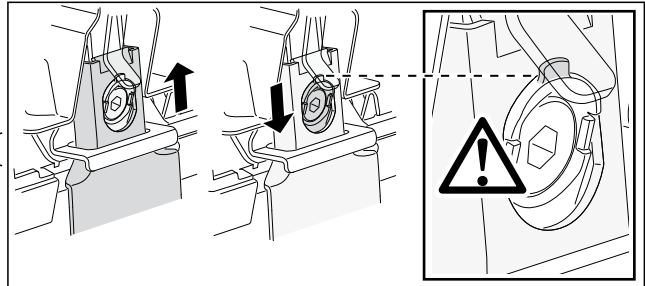
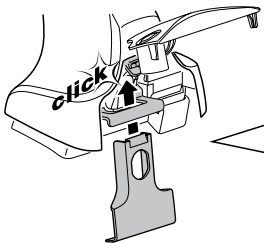
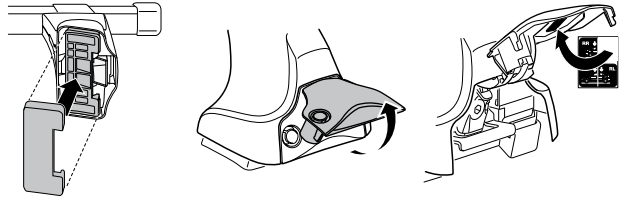
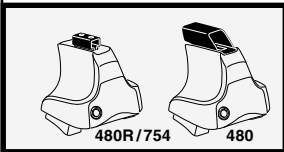
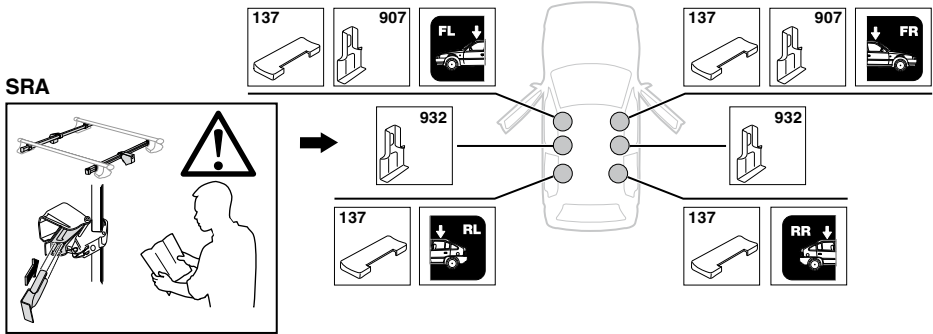
FIAT 500, 3-dr Hatchback, 07-	Y inch	Y mm
	36 5/8"	931 mm



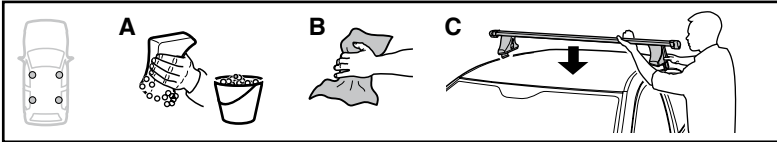
4

FIAT 500, 3-dr Hatchback, 07-

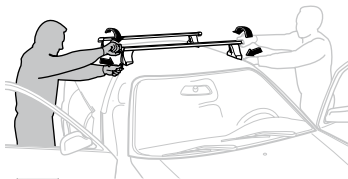
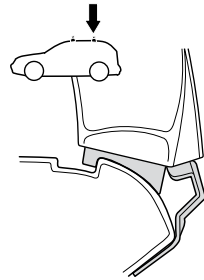
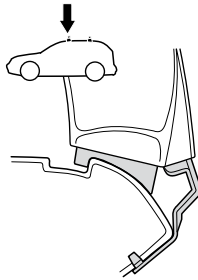
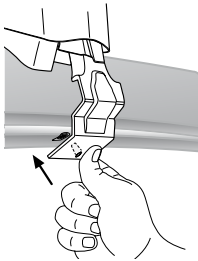
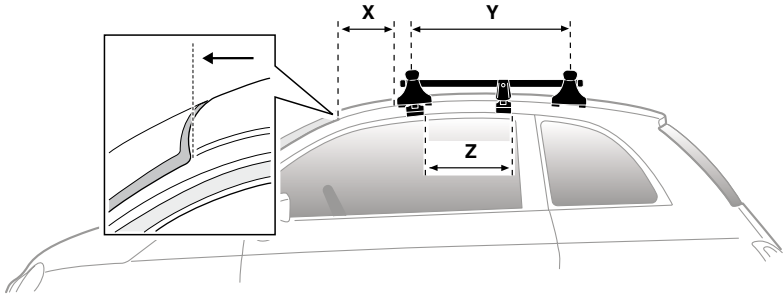
SRA



5



	X mm	Y mm	Z mm	X inch	Y inch	Z inch
FIAT 500, 3-dr Hatchback, 07-	225 mm	600 mm	350 mm	8 ⁷ / ₈ "	23 ⁵ / ₈ "	13 ³ / ₄ "



GB/US Tighten alternately

D Die Schrauben abwechselnd anziehen

F Serrer alternativement chaque côté

NL Afwisselend aan de linker- en de rechterkant aandraaien

I Alternare il serraggio delle viti

E Apretar alternativamente

PT Aperte alternadamente

S Dra åt växelvis

FIN Kierrä vuorotellen

EST Pinguldage vaheldumisi

LAT Pielvelciet pamišus

LIT Užsukinėkite pakaitomis

PL Śruby dokręcaj naprzemiennie

RU Затягивайте попеременно

CZ Pokręťta багаžníka dokręcaj dokręcaj naprzemiennie.

SK Doťahujte striedavo

SLO Privijajte izmenično.

HR Naizmjenično zategnite

HU Egymástól fűggetlenül szorítandó

GR Σφίγγετε εναλλάξ

TR Dönüşümlü sıkın

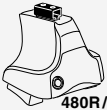
中文 交替拧紧

한국어 번갈아 가며 조이십시오.

日本語 交互に締め付けてください。

ไทย ชั้ในแบบสลับ

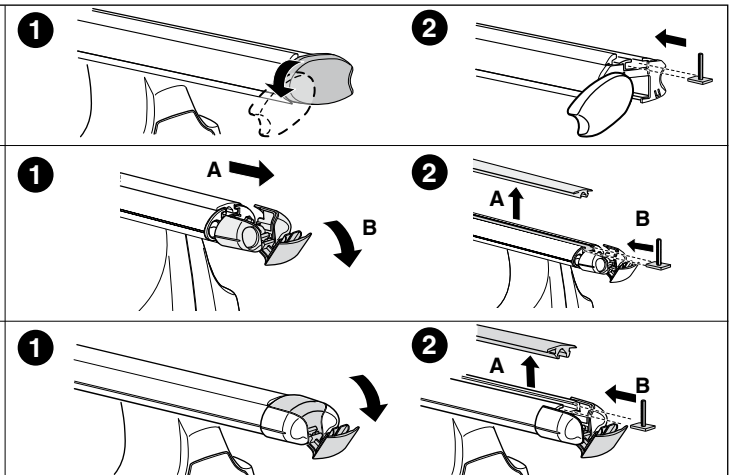
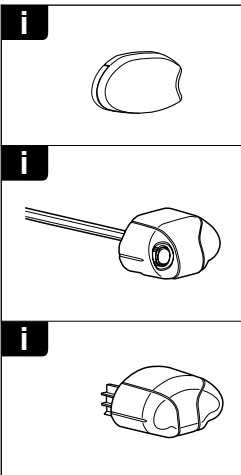
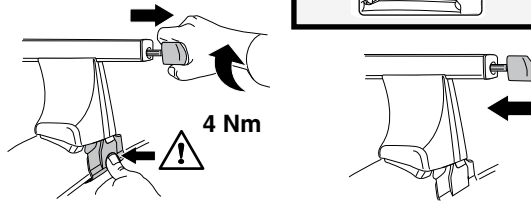
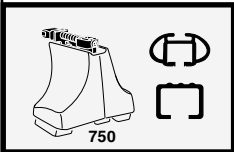
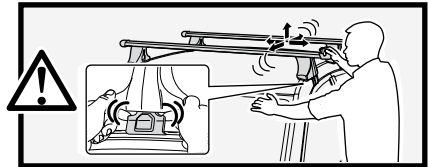
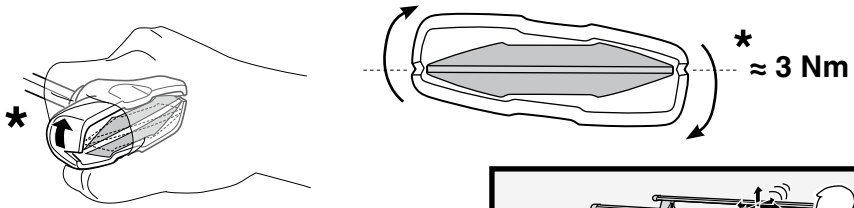
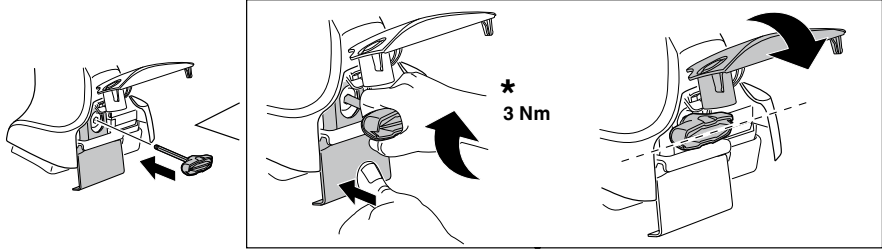
6

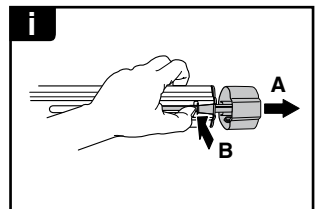
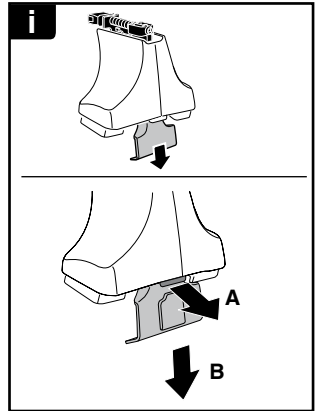


480R/754



480





THULE
SWEDEN
**ONE
KEY
SYSTEM**



- 544 (x4)
- 596 (x6)
- 588 (x8)
- NA 510 (x10)
- EUR 452 (x12)
- ASIA



WW ▶ Thule Sweden AB, Box 69, 330 33 Hillerstorp, SWEDEN
NA ▶ Thule Inc., 42 Silvermine Road, Seymour, Connecticut 06483, USA

info@thule.com
customer.service@thule.com

www.thule.com