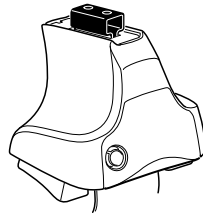
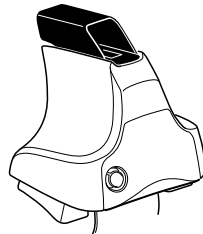
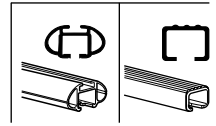


# Kit 1646

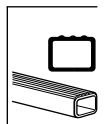
RENAULT Latitude, 4-dr Sedan, 11-



754 Rapid System  
480R Rapid Traverse (North America)



480 Traverse (North America)



**754 Rapid System**  
**480R Rapid Traverse (North America)**

**754 Rapid System**  
**480R Rapid Traverse (North America)**

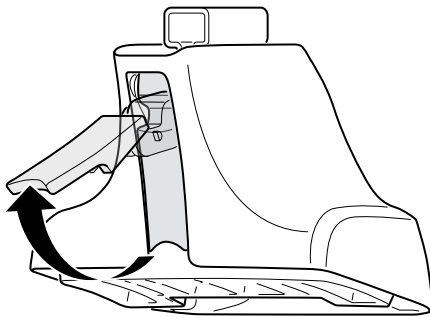
**480 Traverse (North America)**

**(North America)**

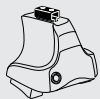
**1176 x 2**  
**1177 x 2**  
**266 x 1**  
**267 x 1**  
**363 x 1**  
**378 x 1**

**x 1**

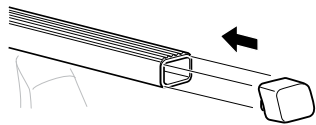
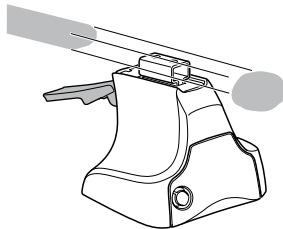
1



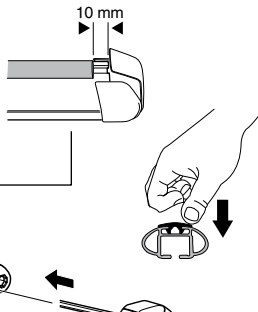
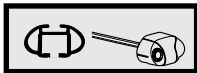
2



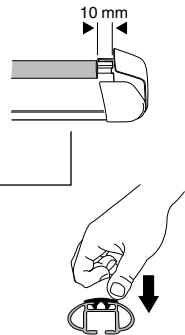
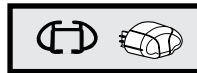
754 Rapid System  
480R Rapid Traverse  
(North America)



x4



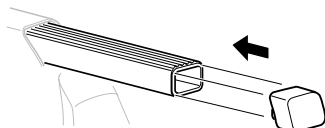
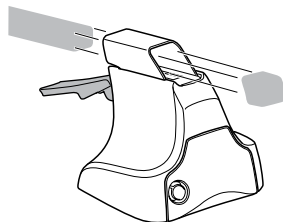
x4



x4

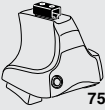


480 Traverse  
(North America)

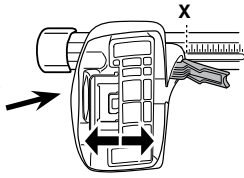


x4

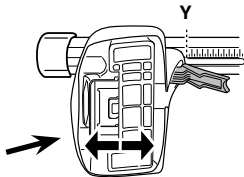
**3**



**754** Rapid System

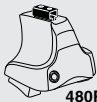


	<b>X</b>
<b>RENAULT Latitude, 4-dr Sedan, 11-</b>	<b>35,5</b>



	<b>Y</b>
<b>RENAULT Latitude, 4-dr Sedan, 11-</b>	<b>33,5</b>

**3**

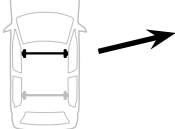


**480R** Rapid Traverse

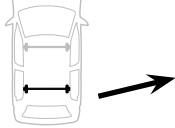


**480** Traverse

**(North America)**

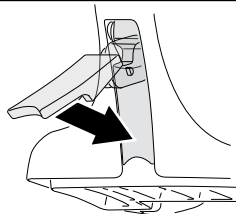


	<b>X inch</b>	<b>X mm</b>
<b>RENAULT Latitude, 4-dr Sedan, 11-</b>	<b>39 <sup>5</sup>/<sub>8</sub>"</b>	<b>1006 mm</b>



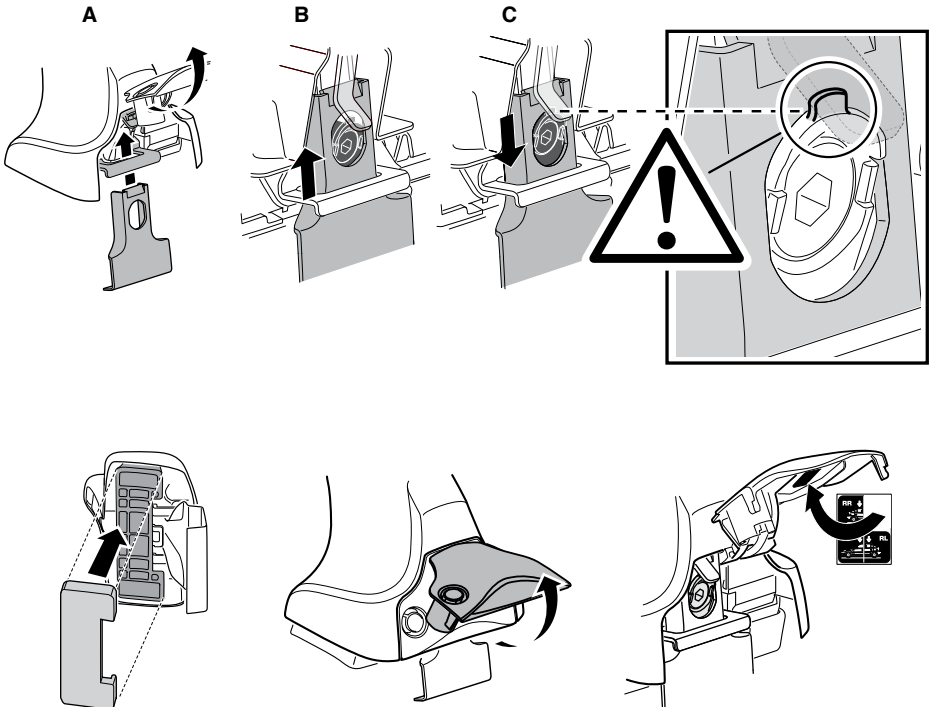
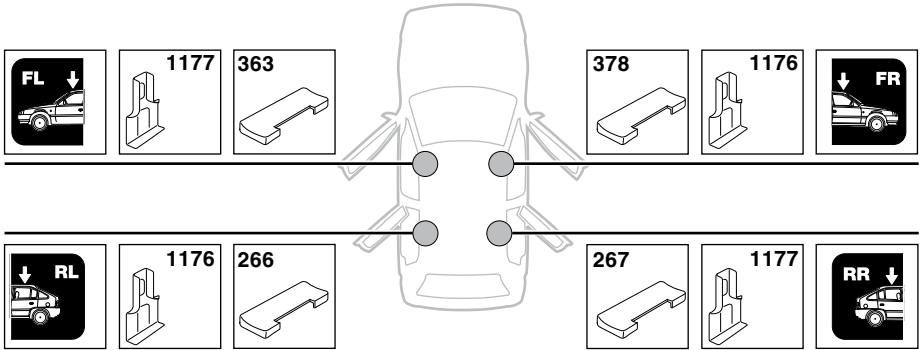
	<b>Y inch</b>	<b>Y mm</b>
<b>RENAULT Latitude, 4-dr Sedan, 11-</b>	<b>38 <sup>7</sup>/<sub>8</sub>"</b>	<b>986 mm</b>

**4**

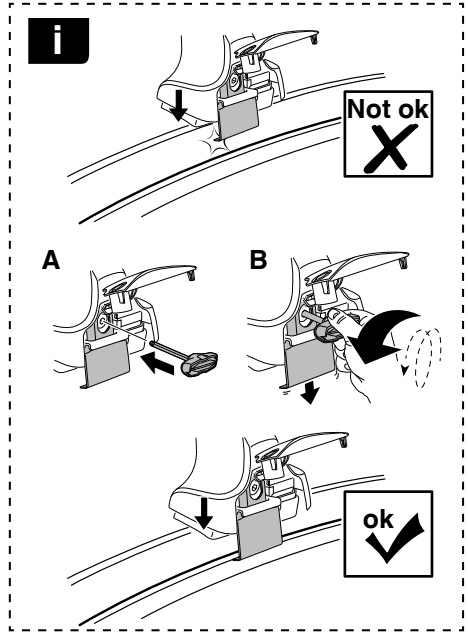
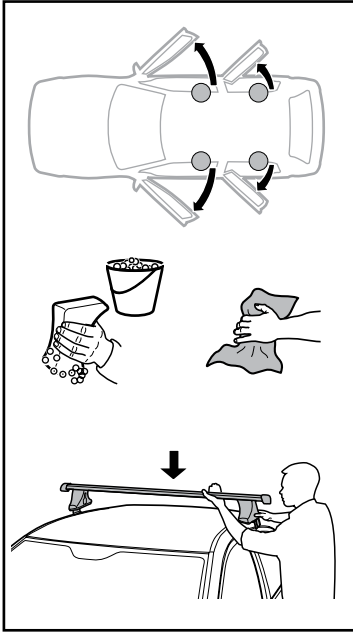


# 5

RENAULT Latitude, 4-dr Sedan, 11-

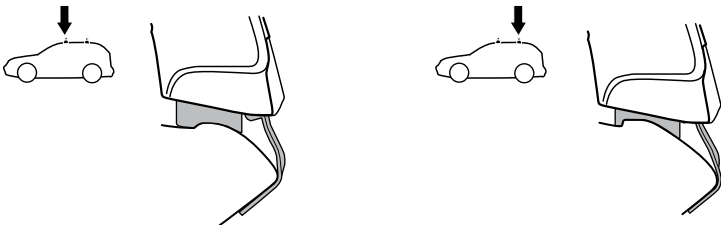
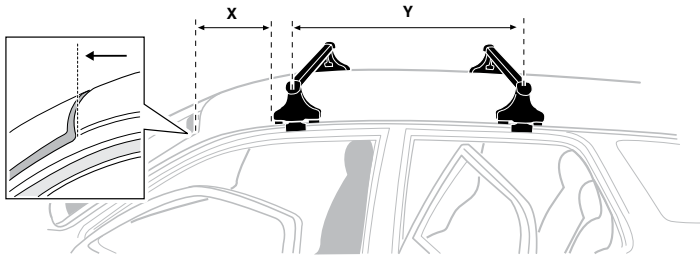


6

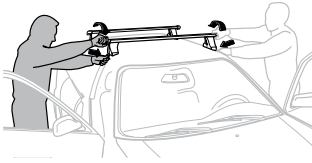


RENAULT Latitude, 4-dr Sedan, 11-

X mm	Y mm	X inch	Y inch
240 mm	700 mm	9 1/2"	27 1/2"



7



<b>GB/US</b>	Tighten alternately
<b>D</b>	Die Schrauben abwechselnd anziehen
<b>F</b>	Serrer alternativement chaque côté
<b>NL</b>	Afwisselend aan de linker- en de rechterkant aandraaien
<b>I</b>	Alternare il serraggio delle viti
<b>E</b>	Apertar alternativamente
<b>PT</b>	Aperte alternadamente
<b>S</b>	Dra åt växelvis
<b>FIN</b>	Kierrä vuorotellen
<b>EST</b>	Pinguldage vaheldumisi
<b>LAT</b>	Pielveiciet pamišus
<b>LIT</b>	Užsukinėkite pakaitomis
<b>PL</b>	Śruby dokręcaj naprzemiennie
<b>RU</b>	Загряивайте попеременно

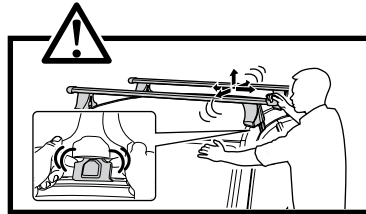
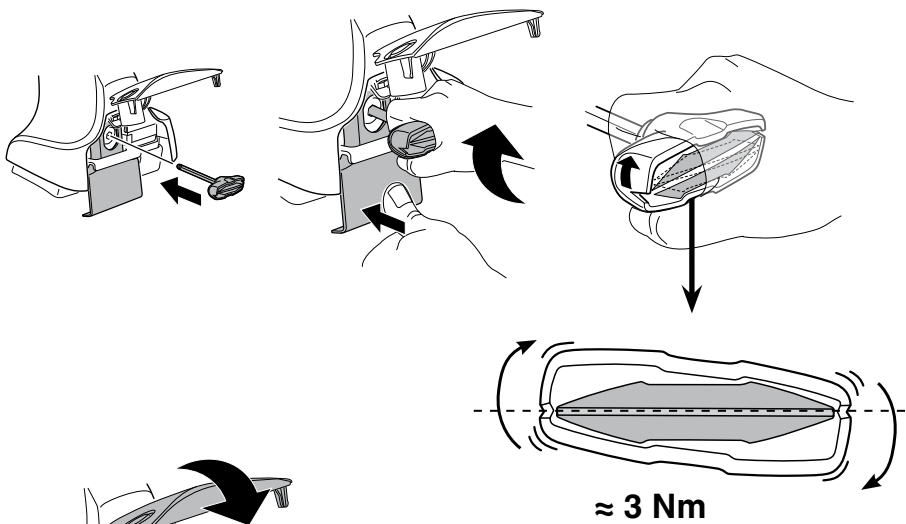
<b>CZ</b>	Pokręřta багаžnika dokręcaj naprzemiennie.
<b>SK</b>	Dofahajte striedavo
<b>SLO</b>	Privijajte izmenično.
<b>HR</b>	Naizmjenočno zategnite
<b>HU</b>	Egymástól függetlenül szorítandó
<b>GR</b>	Σφιγίγτες εναλλάξ
<b>TR</b>	Dönüşümlü sıkın

**中文** 交替拧紧

**한국어** 번갈아 가며 조이십시오.

**日本語** 交互に締め付けてください。

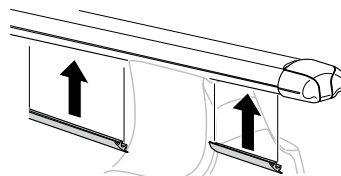
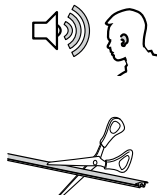
**ไทย** ชันในแบบสลับ

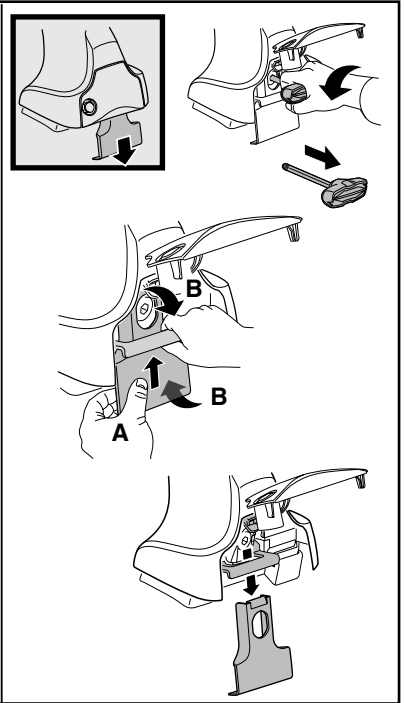
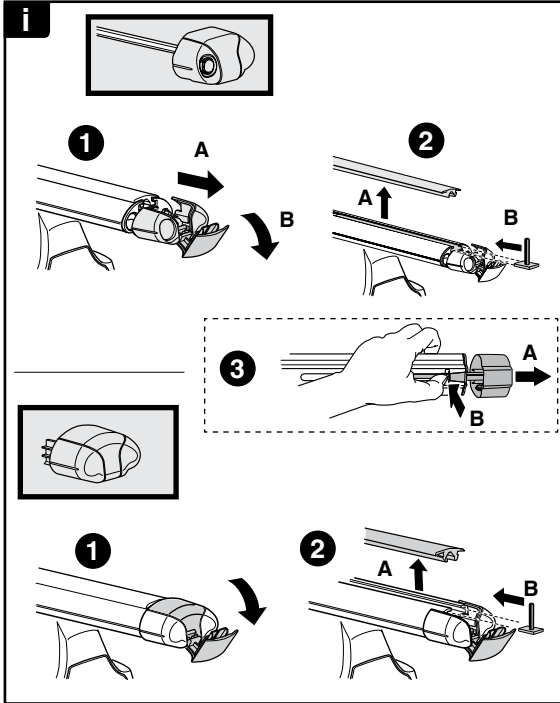
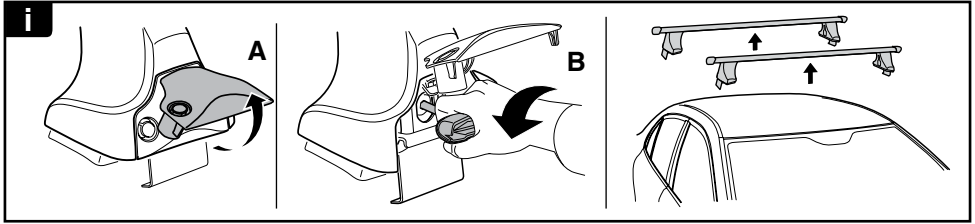


8

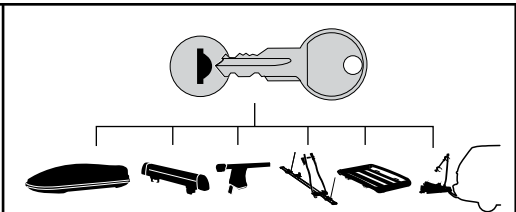


x1  
17 mm

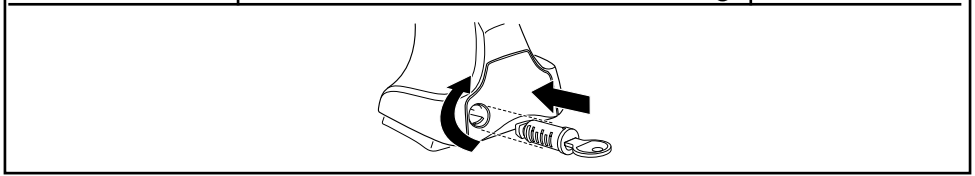




**THULE**  
SWEDEN  
**ONE  
KEY  
SYSTEM**



- 544 (x4)
  - 596 (x6)
  - 588 (x8)
  - 510 (x10)
  - 452 (x12)
- NA  
EUR  
ASIA



WW ▶ Thule Sweden AB, Box 69, 330 33 Hillerstorp, SWEDEN  
NA ▶ Thule Inc., 42 Silvermine Road, Seymour, Connecticut 06483, USA

info@thule.com  
customer.service@thule.com

www.thule.com