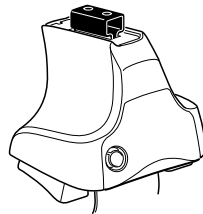
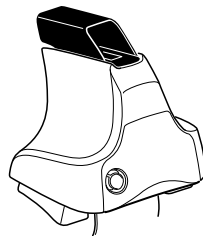
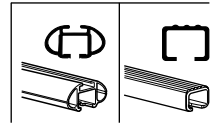


Kit 1666

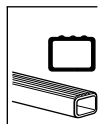
CITROËN DS4, 5-dr Hatchback, 11-



754 Rapid System
480R Rapid Traverse (North America)



480 Traverse (North America)



754 Rapid System

480R Rapid Traverse (North America)

754 Rapid System

480R Rapid Traverse (North America)

(North America)

1190 x2

1191 x1

1197 x1

167 x1

169 x1

323 x2

FR FL FR RL

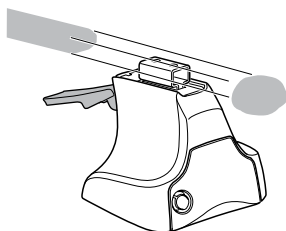
1



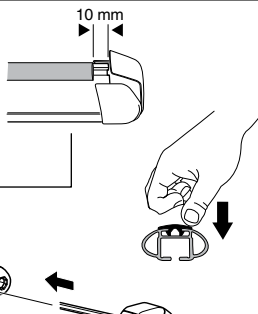
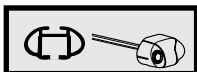
2



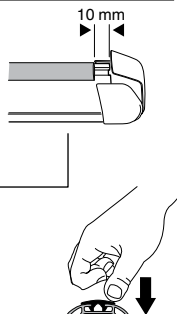
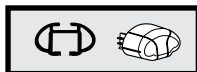
754 Rapid System
480R Rapid Traverse
(North America)



x4



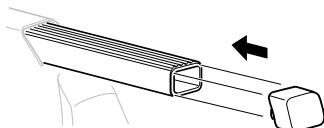
x4



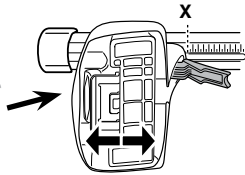
x4



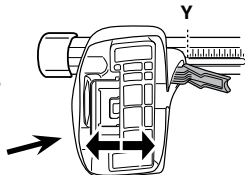
480 Traverse
(North America)



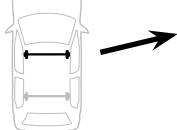
x4

3**754** Rapid System

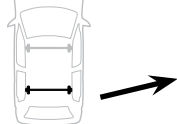
	X
CITROËN DS4, 5-dr Hatchback, 11-	38



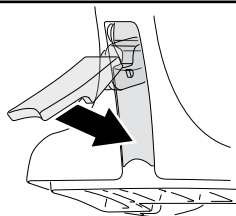
	Y
CITROËN DS4, 5-dr Hatchback, 11-	32

3**480R** Rapid Traverse**480** Traverse**(North America)**

	X inch	X mm
CITROËN DS4, 5-dr Hatchback, 11-	40 ⁵/₈"	1031 mm

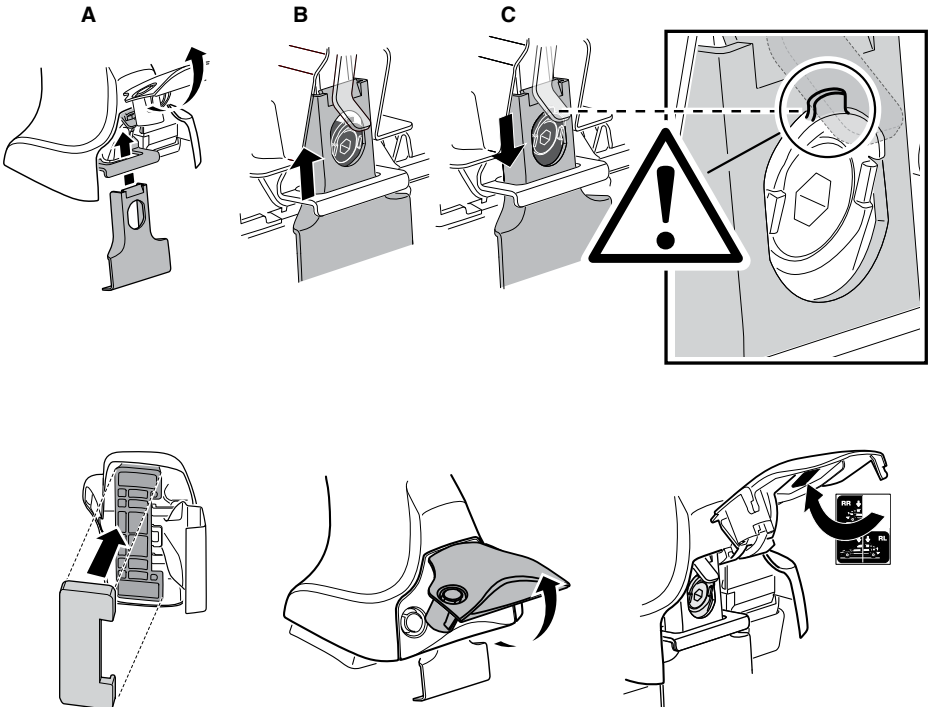
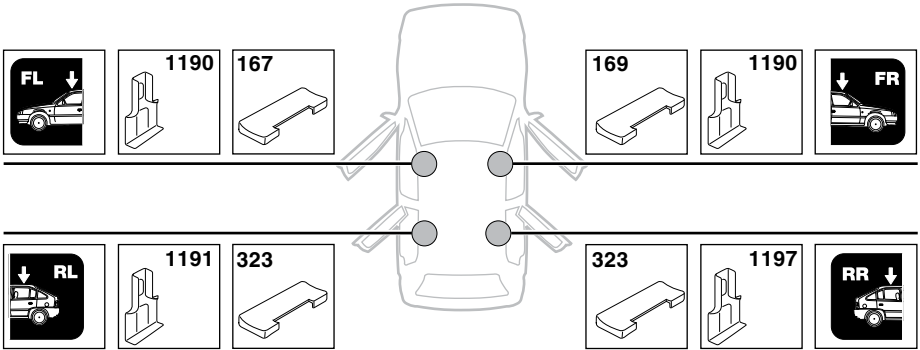


	Y inch	Y mm
CITROËN DS4, 5-dr Hatchback, 11-	38 ¹/₄"	971 mm

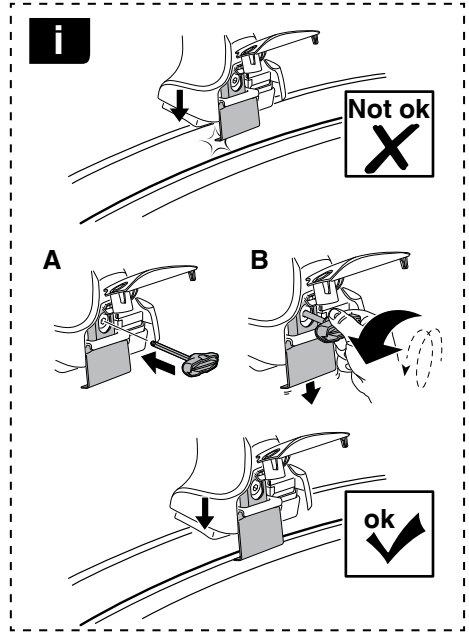
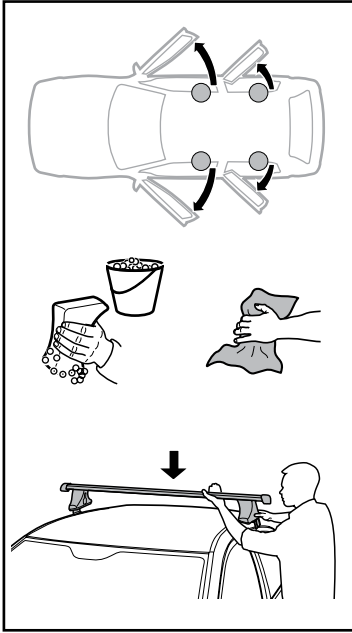
4

5

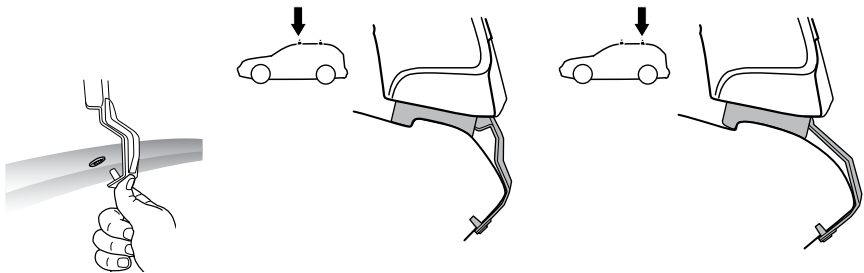
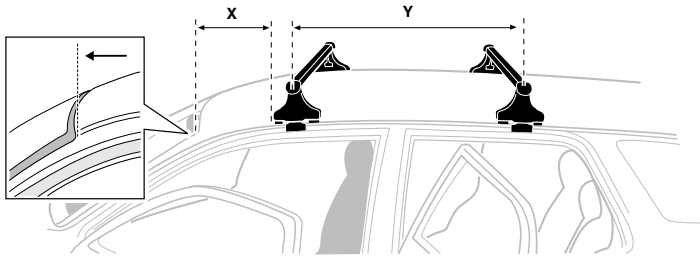
CITROËN DS4, 5-dr Hatchback, 11-



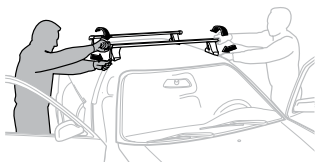
6



	X mm	Y mm	X inch	Y inch
CITROËN DS4, 5-dr Hatchback, 11-	63 mm	730 mm	2 1/2"	28 3/4"



7



GB/US	Tighten alternately
D	Die Schrauben abwechselnd anziehen
F	Serrer alternativement chaque côté
NL	Afwisselend aan de linker- en de rechterkant aandraaien
I	Alternare il serraggio delle viti
E	Apertar alternativamente
PT	Aperte alternadamente
S	Dra åt växelvis
FIN	Kierrä vuorotellen
EST	Pinguldage vaheldumisi
LAT	Pielveiciet pamišus
LIT	Užsukinėkite pakaitomis
PL	Śruby dokręcaj naprzemiennie
RU	Затягивайте попеременно

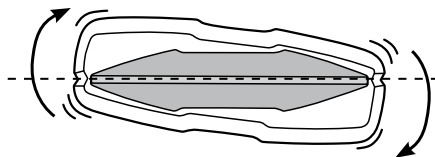
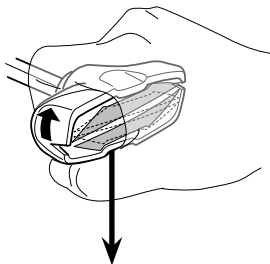
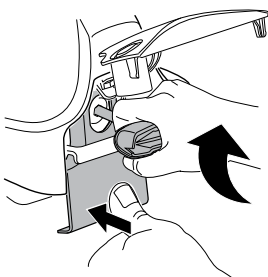
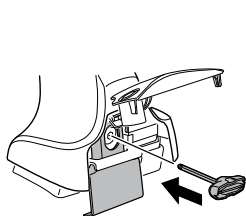
CZ	Pokręřta багаžnika dokręcaj naprzemiennie.
SK	Dofahajte striedavo
SLO	Privijajte izmenično.
HR	Naizmjenočno zategnite
HU	Egymástól függetlenül szorítandó
GR	Σφιγίγτες εναλλάξ
TR	Dönüşümlü sıkın

中文 交替拧紧

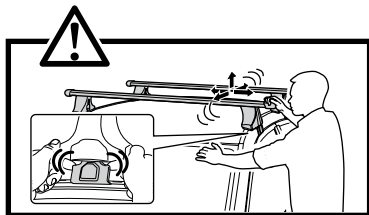
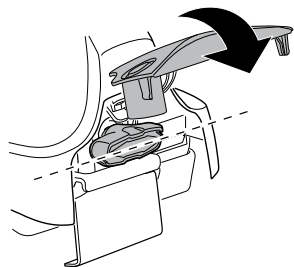
한국어 번갈아 가며 조이십시오.

日本語 交互に締め付けてください。

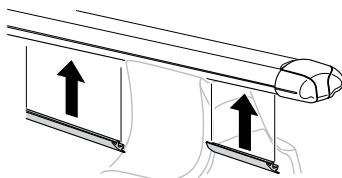
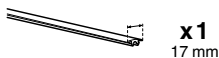
ไทย ชันในแบบสลับ

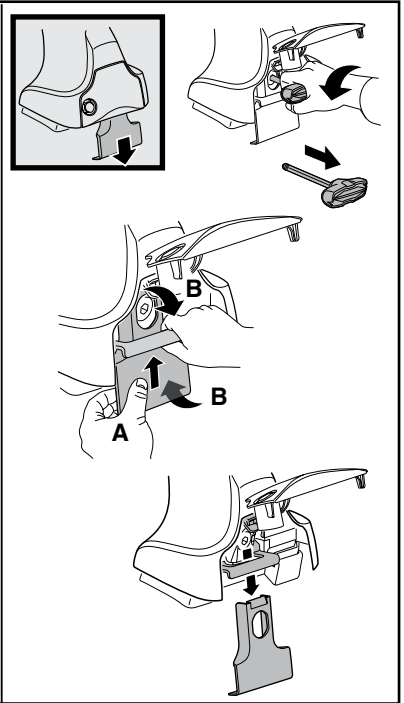
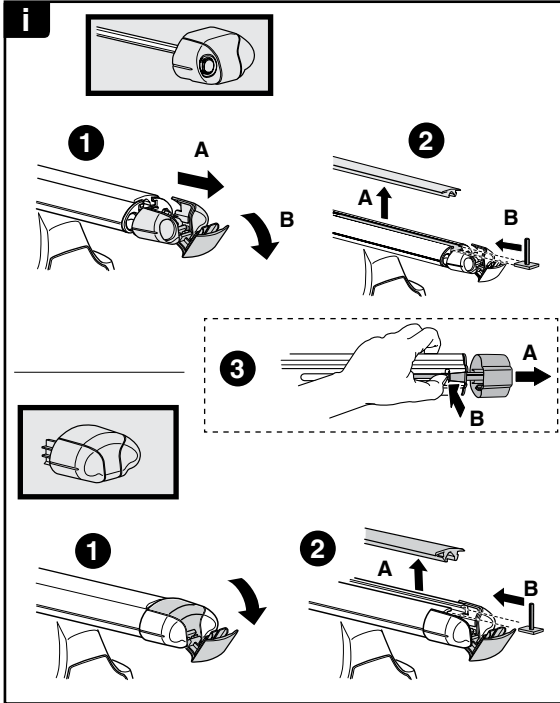


≈ 3 Nm



8





THULE
SWEDEN
**ONE
KEY
SYSTEM**



		(x4)
		(x6)
		(x8)
NA		(x10)
EUR		(x12)
ASIA		



WW ▶ Thule Sweden AB, Box 69, 330 33 Hillerstorp, SWEDEN
NA ▶ Thule Inc., 42 Silvermine Road, Seymour, Connecticut 06483, USA

info@thule.com
customer.service@thule.com

www.thule.com