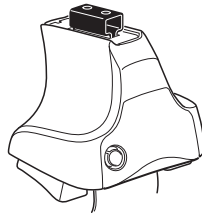
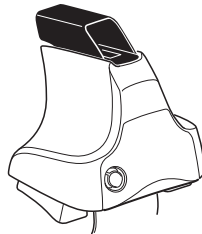
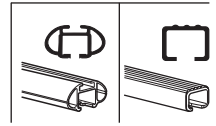


# Kit 1680

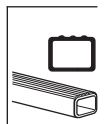
MINI Clubman, 4-dr Hatchback, 08–



754 Rapid System  
480R Rapid Traverse (North America)



480 Traverse (North America)



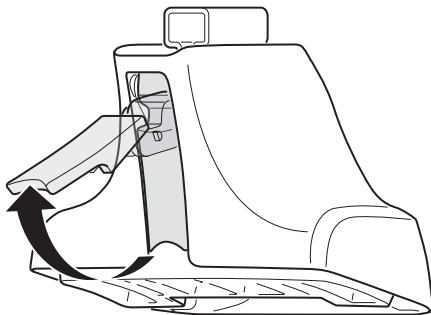


- 754 Rapid System: x1 (box), x1 (ruler), x4 (754 Rapid System), x4 (480R Rapid Traverse (North America)), x4 (screwdriver), x4 (screw).
- 480 Traverse (North America): x1 (ruler), x4 (480 Traverse (North America)), x4 (screwdriver), x4 (screw).

- Bar: x2
- Hardware: x2 (23 mm), x2 (23 mm), x4 (screw), x4 (screw)
- Hardware: x1 (17 mm), x2 (23 mm), x2 (23 mm), x2 (23 mm), x4 (screw)
- (North America): x2 (23 mm), x2 (bar), x2 (23 mm)

- Bracket: x4 (1224)
- Bracket: x4 (308)
- Hardware: x1 (52269)
- Hardware: x4 (52306)
- Hardware: x1 (FR/FL, RL/RR diagram)

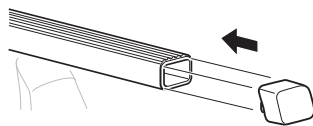
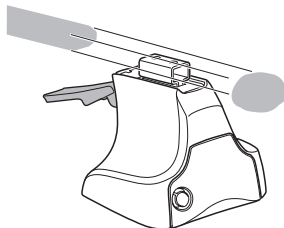
1



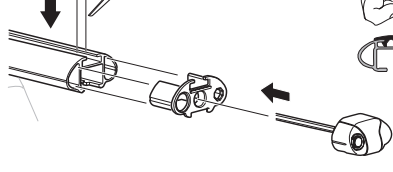
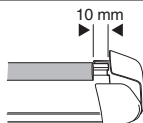
2



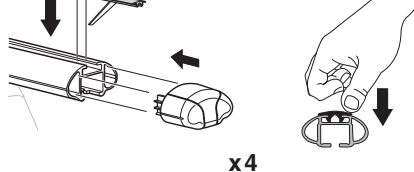
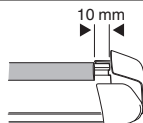
754 Rapid System  
480R Rapid Traverse  
(North America)



x4



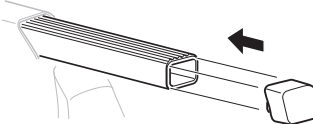
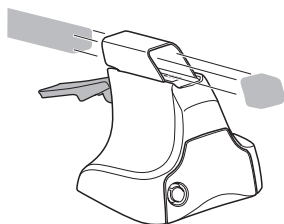
x4



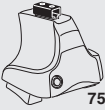
x4



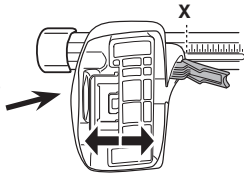
480 Traverse  
(North America)



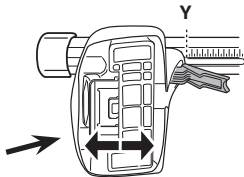
x4

**3**

754 Rapid System



	X
MINI Clubman, 4-dr Hatchback, 08-	19,5



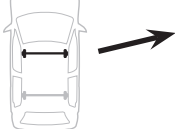
	Y
MINI Clubman, 4-dr Hatchback, 08-	19,5

**3**

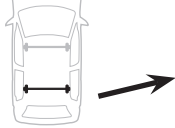
480R Rapid Traverse



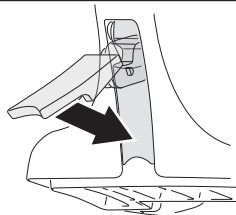
480 Traverse

**(North America)**

	X inch	X mm
MINI Clubman, 4-dr Hatchback, 08-	33 1/4"	846 mm

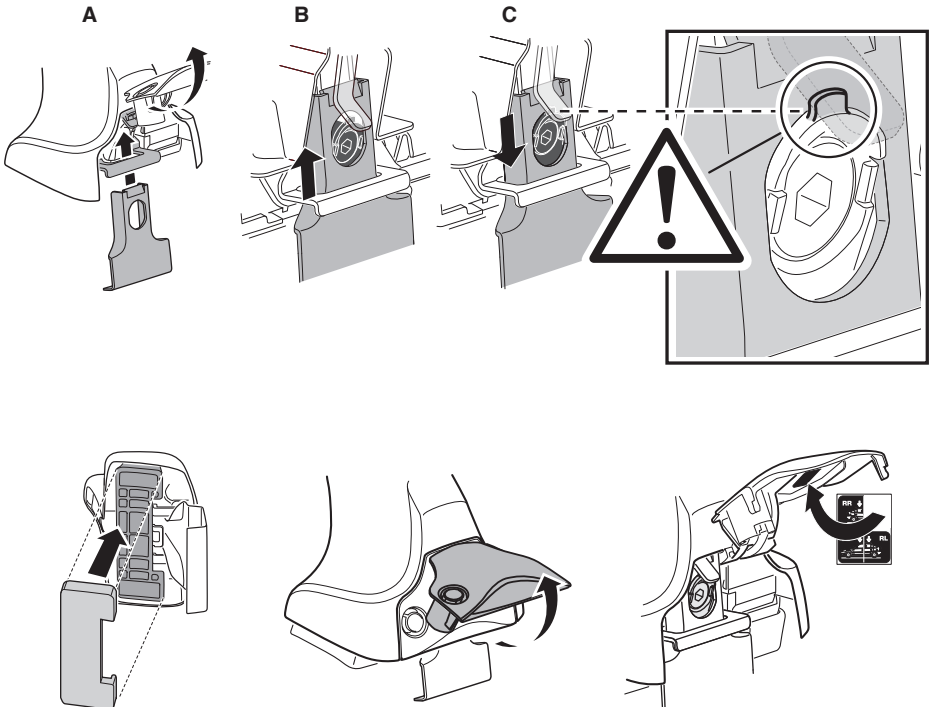
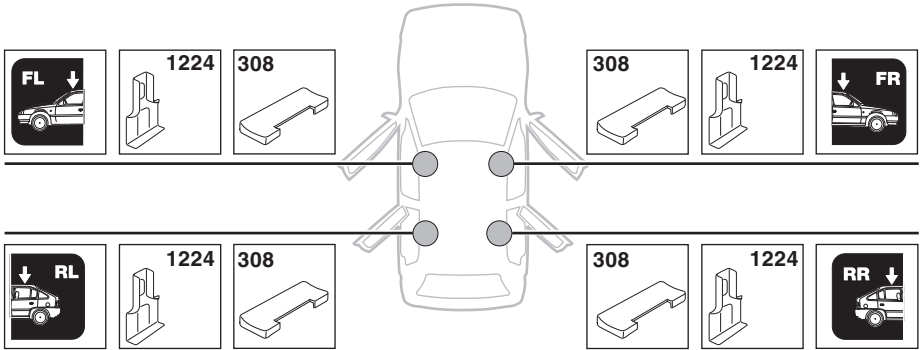


	Y inch	Y mm
MINI Clubman, 4-dr Hatchback, 08-	33 1/4"	846 mm

**4**

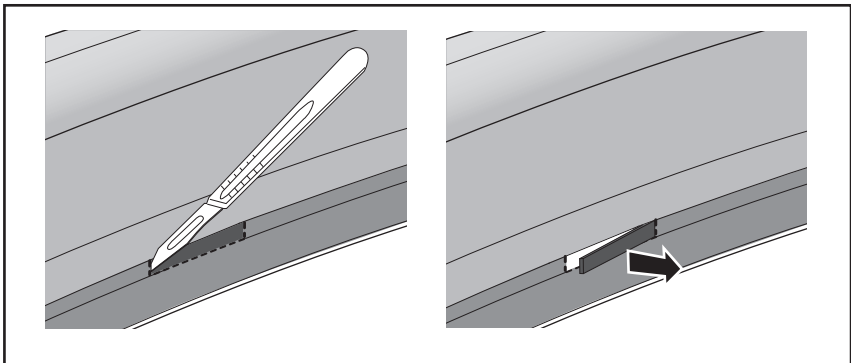
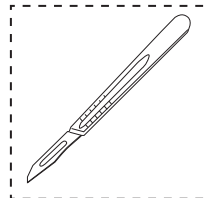
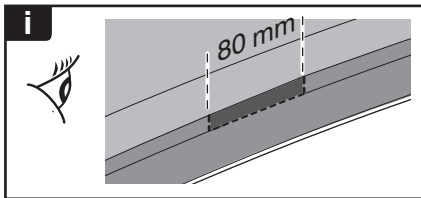
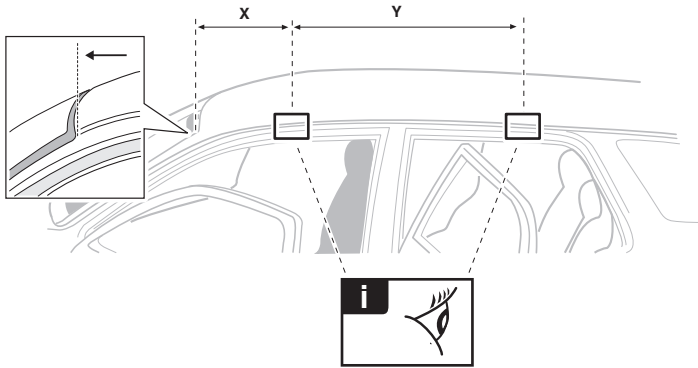
# 5

MINI Clubman, 4-dr Hatchback, 08-

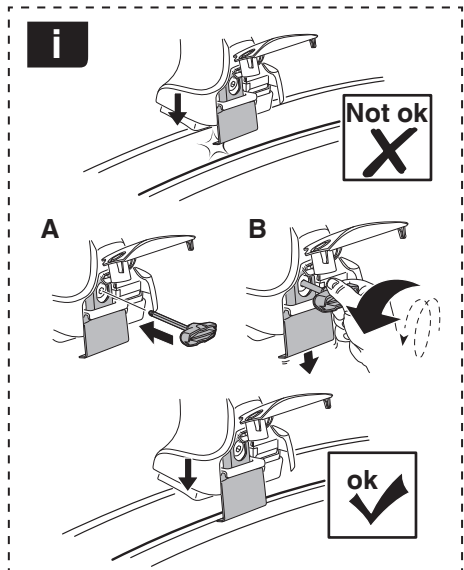
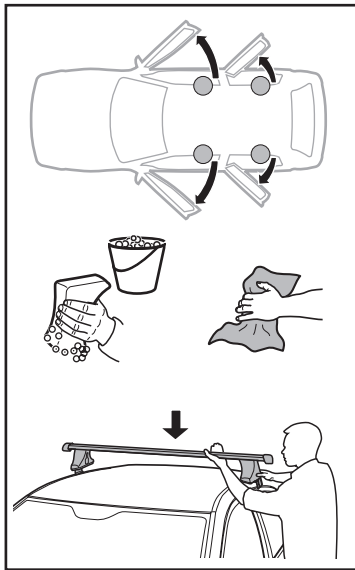


# 6

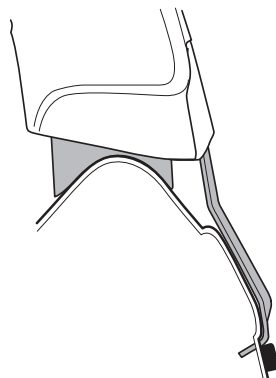
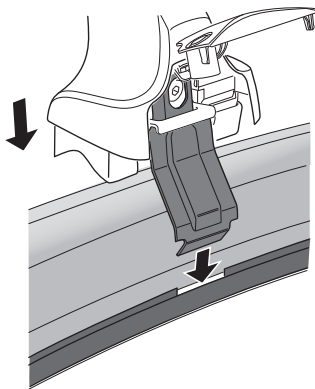
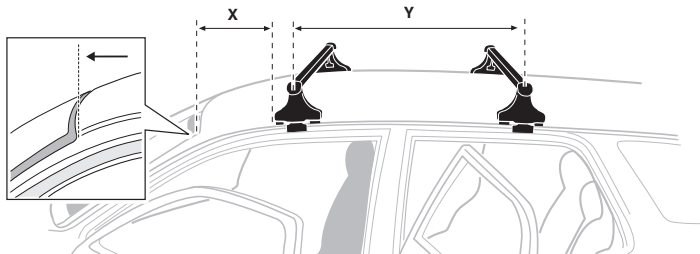
	X mm	Y mm	X inch	Y inch
MINI Clubman, 4-dr Hatchback, 08-	380 mm	750 mm	15"	29 1/2"



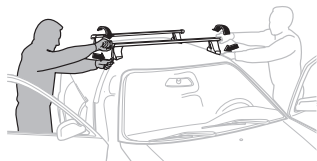
7



	X mm	Y mm	X inch	Y inch
MINI Clubman, 4-dr Hatchback, 08-	310 mm	750 mm	12 1/4"	29 1/2"





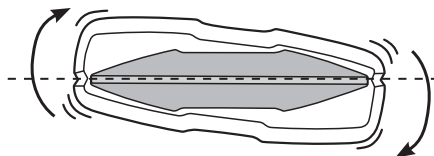
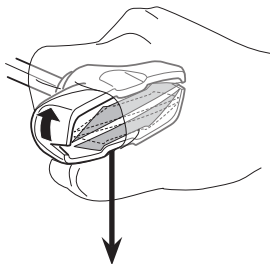
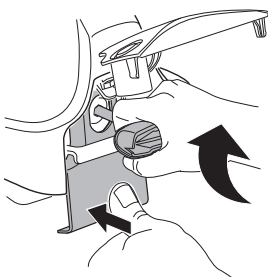
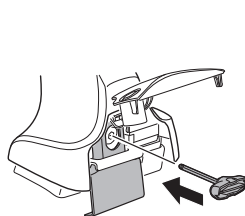
**8**

EN Tighten alternately  
 DE Die Schrauben abwechselnd anziehen  
 FR Serrer alternativement chaque côté  
 NL Afwisselend aan de linker- en de rechterkant aandraaien  
 IT Alternare il serraggio delle viti  
 ES Apretar alternativamente  
 PT Aperte alternadamente  
 SV Dra åt växelvis  
 DK Spænd skiftevis  
 NE Trekk til vekselvis  
 FI Kierrä vuorotellen  
 ET Pinguldage vaheldumisi  
 LV Pievelciet pamišus  
 LT Užsukinėkite pakaitomis  
 PL Śruby dokręcaj naprzemiennie

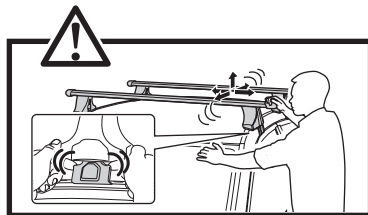
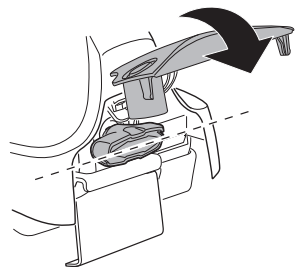
RU Затягивайте попеременно  
 UK Затягти по чергово  
 BG Затегнете последователно  
 CS Pokręťta багаžníka dokręcaj dokręcaj naprzemiennie.  
 SK Dotiahujte striedavo  
 SL Privijajte izmenično.  
 HR/BIH Naizmjenično zategnite  
 HU Egymástól függetlenül szorítandó  
 EL Σφίγγετε εναλλάξ  
 TR Döñüşümlü sıkın

إحكام الربط بالتناوب  
 AR חזק לסיבוב  
 HE

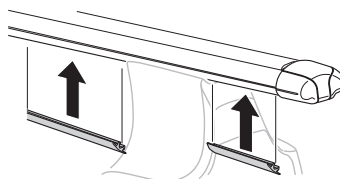
ZH 交替拧紧  
 JA 自動固定  
 KO 번갈아 조이기  
 TH ซ้บในแบบสลับ



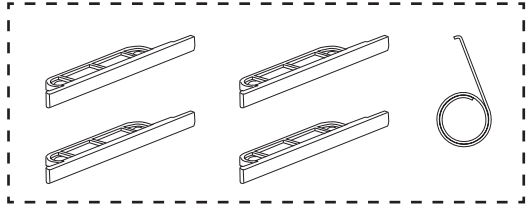
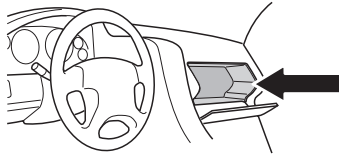
≈ 3 Nm

**9**

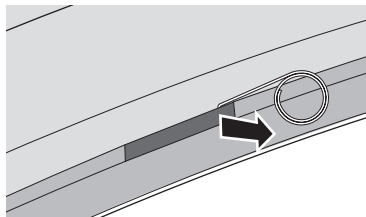
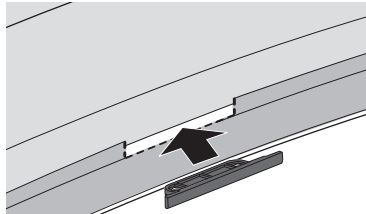
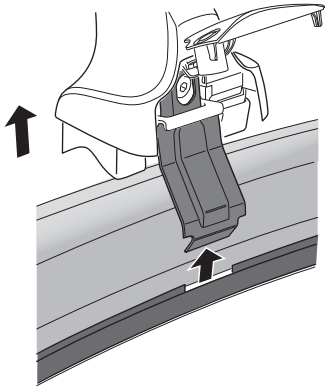
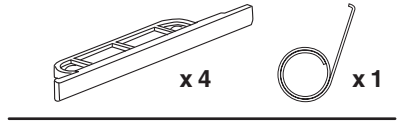
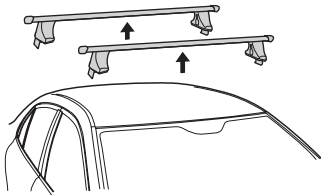
x1  
17 mm



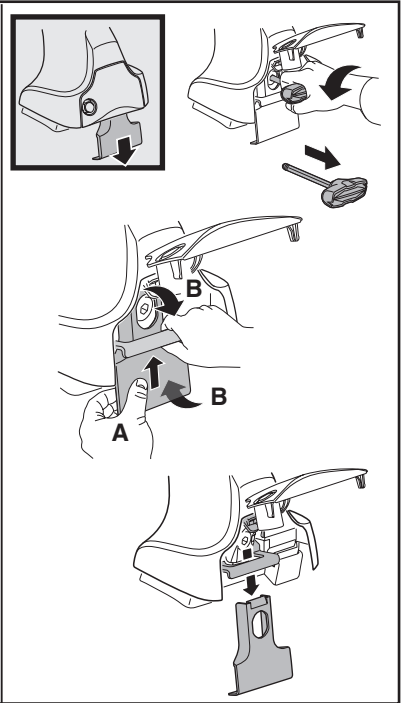
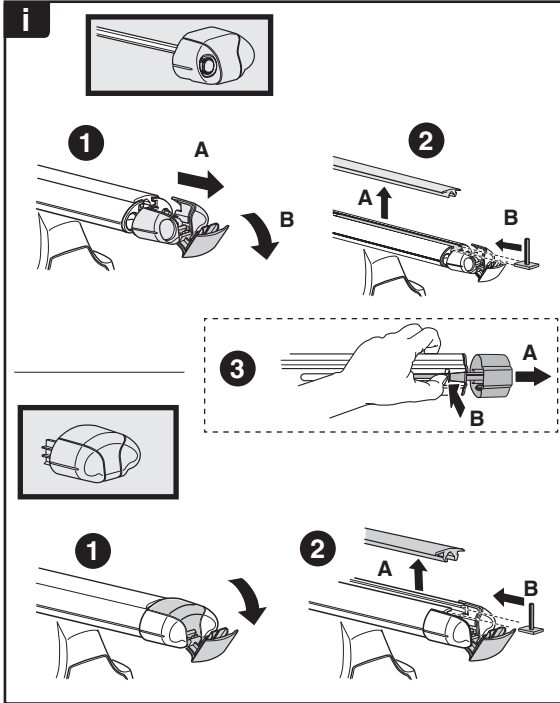
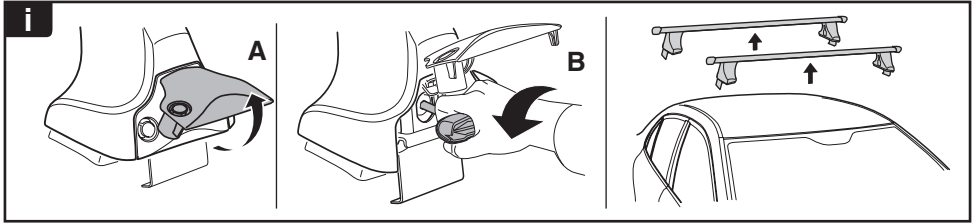
**i**



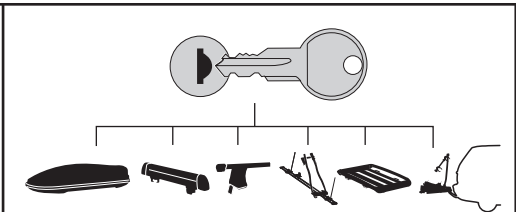
**i**



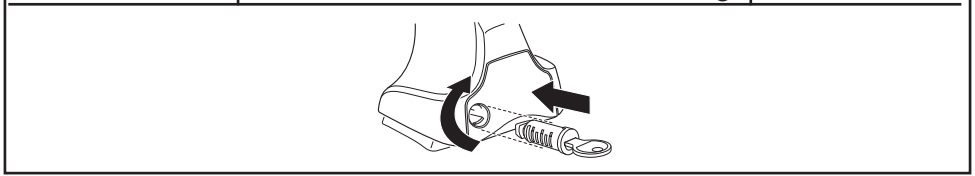




**THULE**  
SWEDEN  
**ONE  
KEY  
SYSTEM**



		(x4)
		(x6)
		(x8)
NA		(x10)
EUR		(x12)
ASIA		



WW ▶ Thule Sweden AB, Box 69, 330 33 Hillerstorp, SWEDEN  
NA ▶ Thule Inc., 42 Silvermine Road, Seymour, Connecticut 06483, USA

info@thule.com  
customer.service@thule.com

www.thule.com