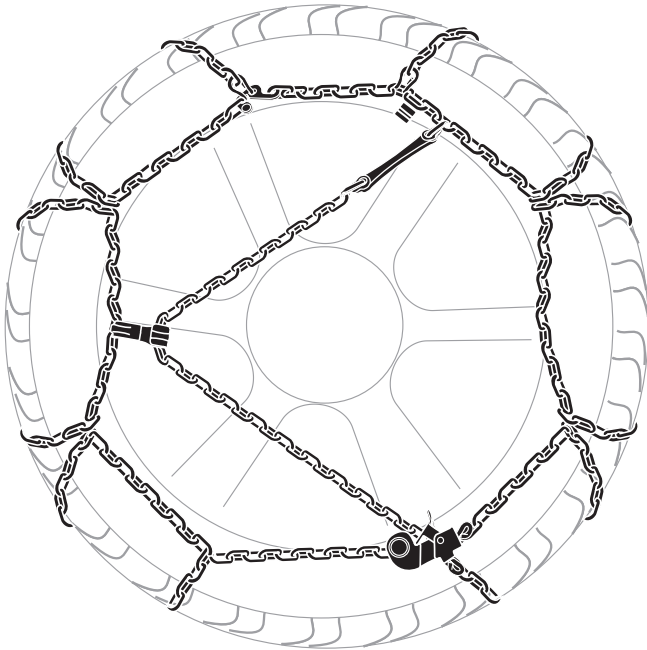
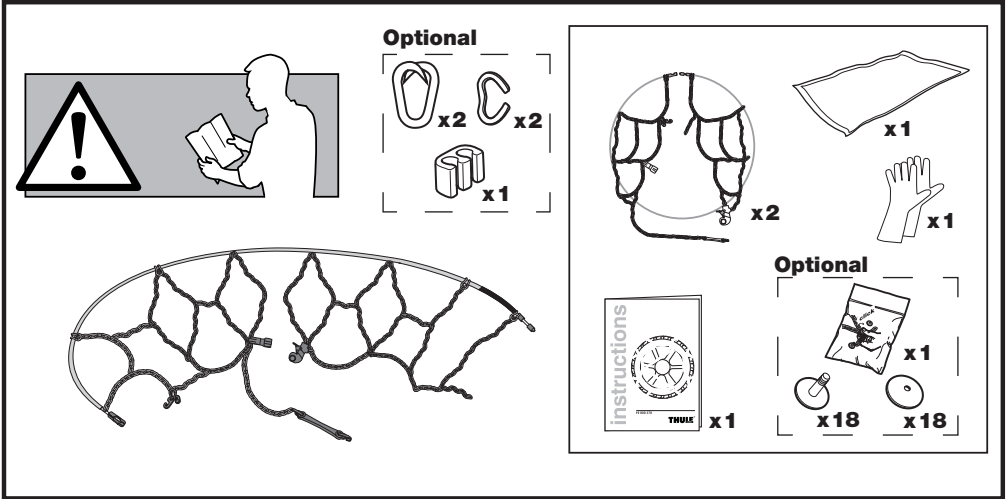


➤ Instructions

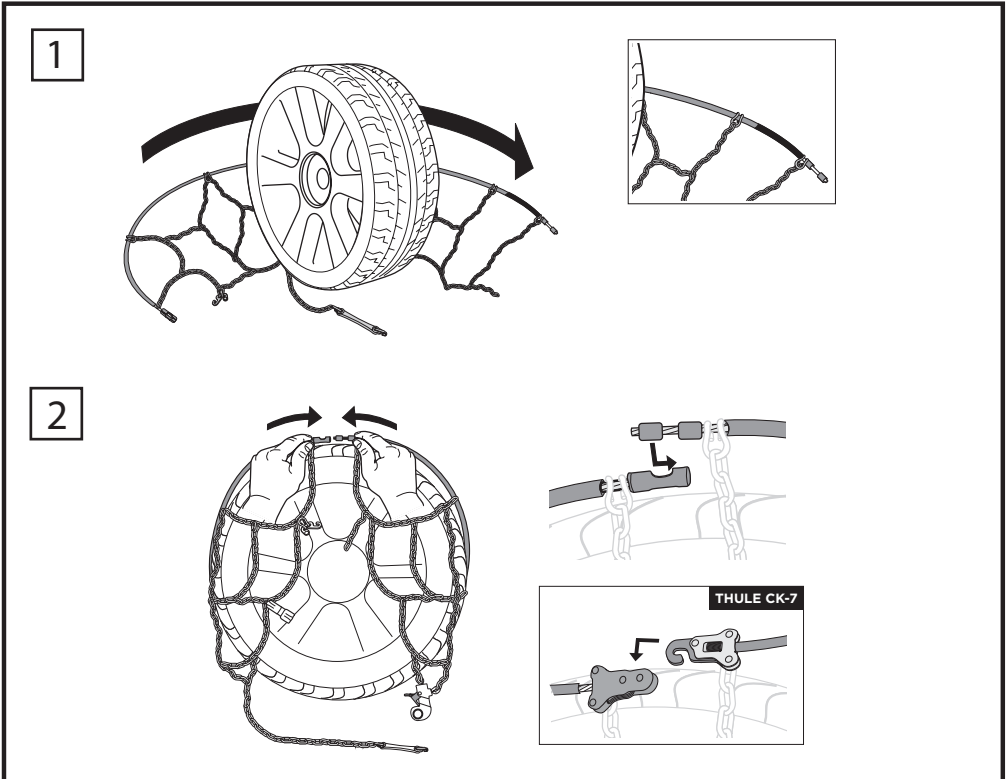


20 19 800 389

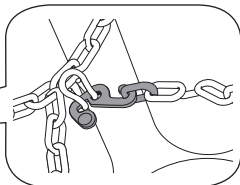
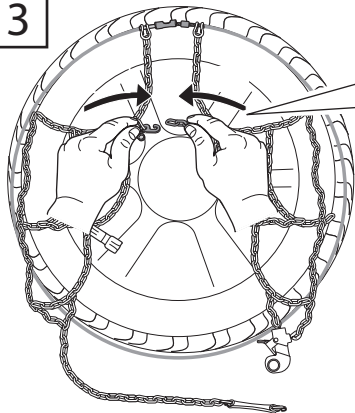
CONTENTS



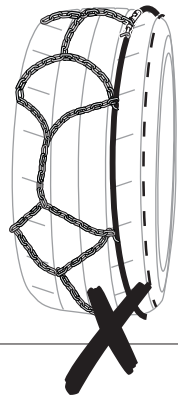
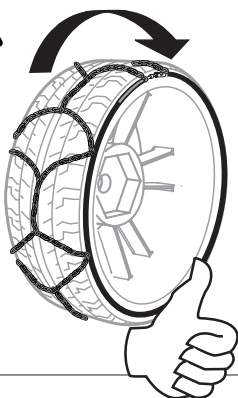
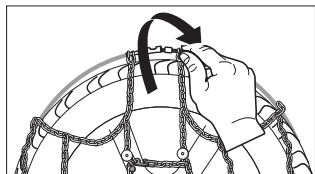
FITTING



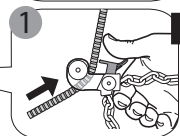
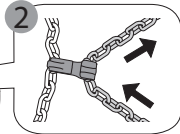
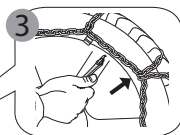
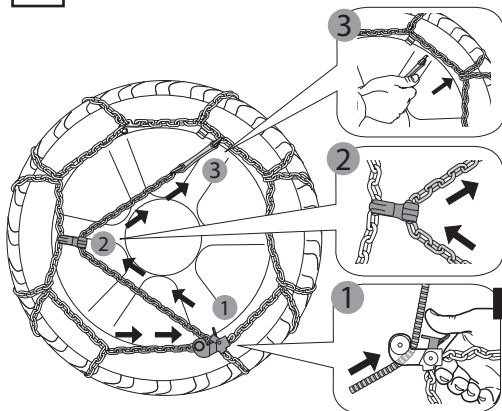
3



4

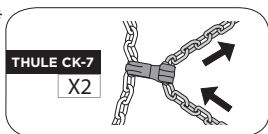


5



*

*



THULE CK-7
X2

GB

Each snow chain can fit several tyre sizes. It may happen that an adjustment of the snow chain dimension might be required in order to perfectly fit the tyre. This adjustment can be done using the adjusting links on the upper side chain.

IT

Ogni catena copre diverse misure di pneumatico. Per questo motivo, in alcuni casi, potrebbe essere necessaria la regolazione della dimensione della catena per calzare perfettamente il pneumatico. La regolazione può essere effettuata utilizzando le maglie di regolazione presenti sulla parte superiore della catena laterale.

DE

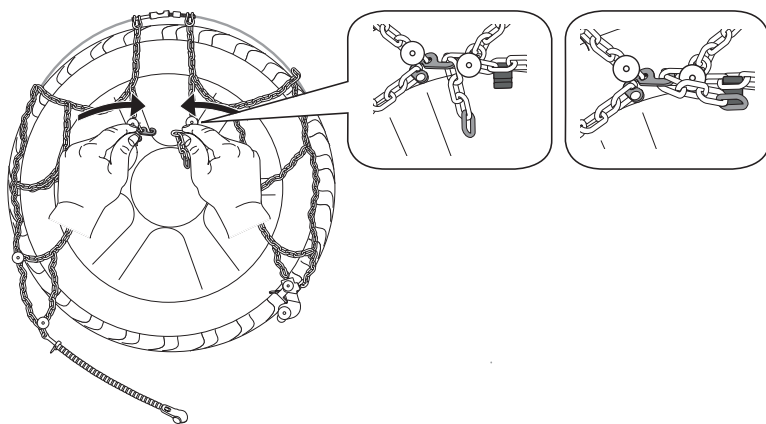
Jede Kette kann auf mehrere Reifengröße passen. Es kann sein, dass eine Anpassung der Kettengröße erforderlich ist, um auf den Reifen perfekt zu passen. Das kann beim Verwenden der Regulierungsglieder auf der oberen Seitenketten gemacht werden.

FR

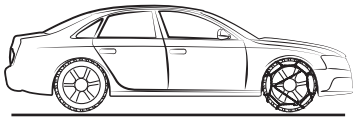
Chaque chaîne à neige peut se monter sur plusieurs tailles de pneus. Un ajustement de la dimension chaînes à neige peut être nécessaires afin de s'adapter parfaitement à la roue. Ce réglage peut être effectué en utilisant les maillons de régulation positionné sur la partie supérieur de la chaîne latérale.

ES

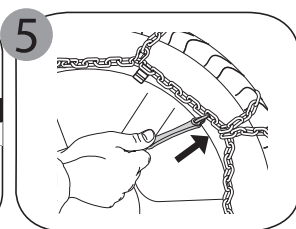
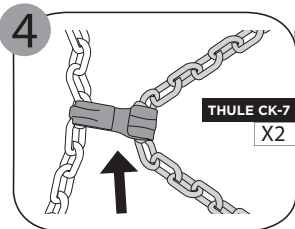
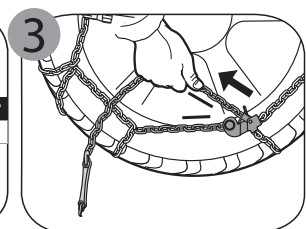
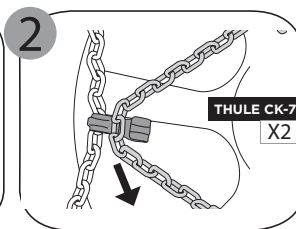
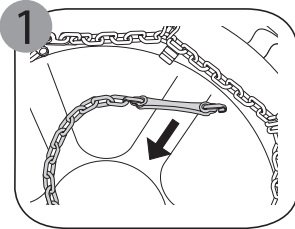
Cada cadena cubre diferentes medidas de neumático; por lo tanto, en algunos casos, podría ser necesario regular la dimensión de la cadena para ajustarla perfectamente al neumático. El ajuste puede realizarse mediante el uso de las mallas de ajuste en la parte superior de la cadena lateral.



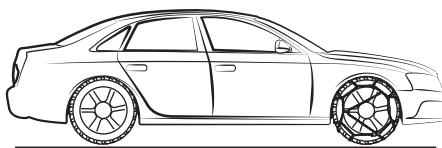
6



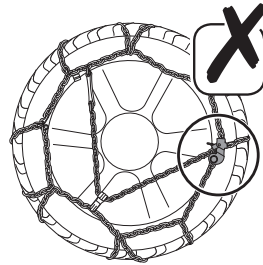
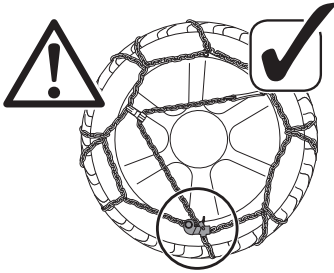
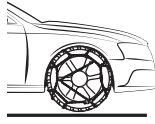
7



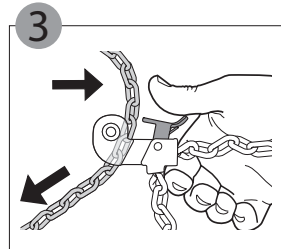
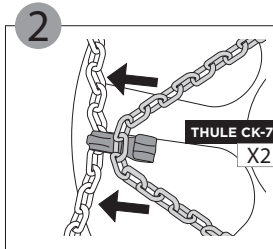
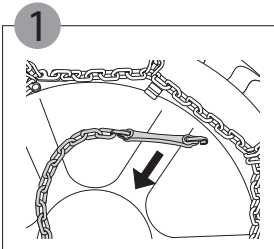
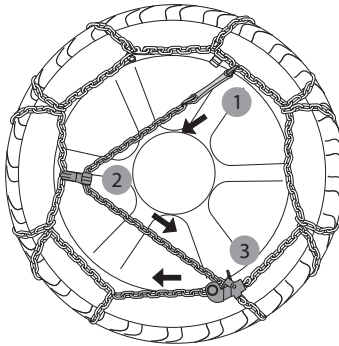
8



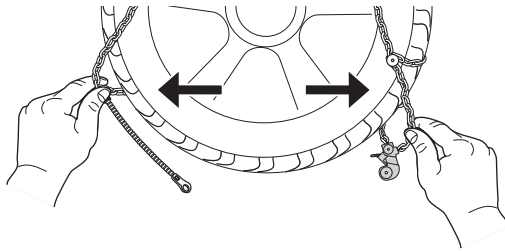
REMOVING



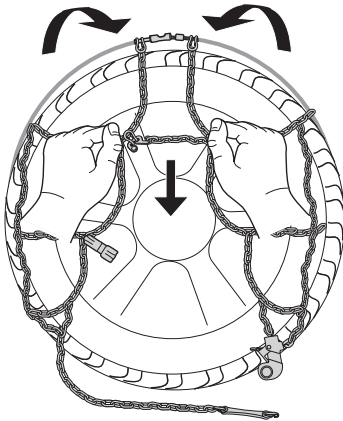
1



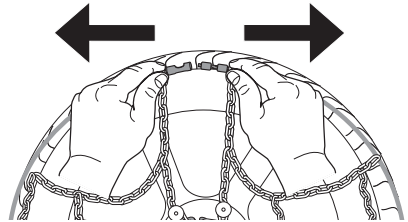
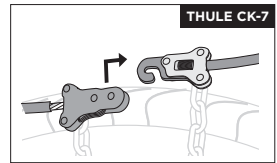
2



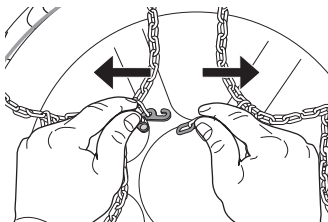
3



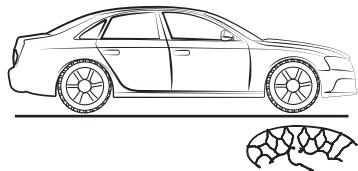
4

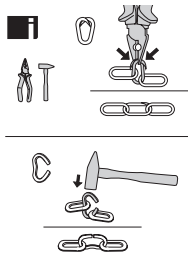


5

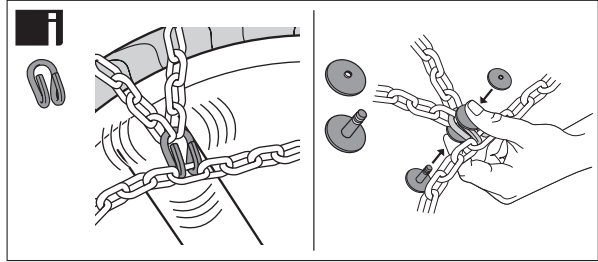


6





OPTIONAL



INSTRUCTIONS AND RECOMMENDATIONS FOR USE

